

# EW\_Drift-Faraday-Imaging-Jasmet SSW January 2017 Campaign Report

This is an analysis of RTIs during EWDrift-Faraday-Imaging campaign from January 23 to 27, 2017. We show the RTIs and results.

## EW\_DRIFT-FARADAY-IMAGING:

January, 23:

\_ Start the campaign from 17:00 hours.

\_ Spread F: weak from 19 to 24 hours.

\_ % Operation/8h: 100.00

Log:

\_ 23 Jan 17:00 Start campaign.

\_ 23 Jan 17:30 Start of Imaging.

Staff in charge

07-20: I. Manay. 20-24: A. Belleza.

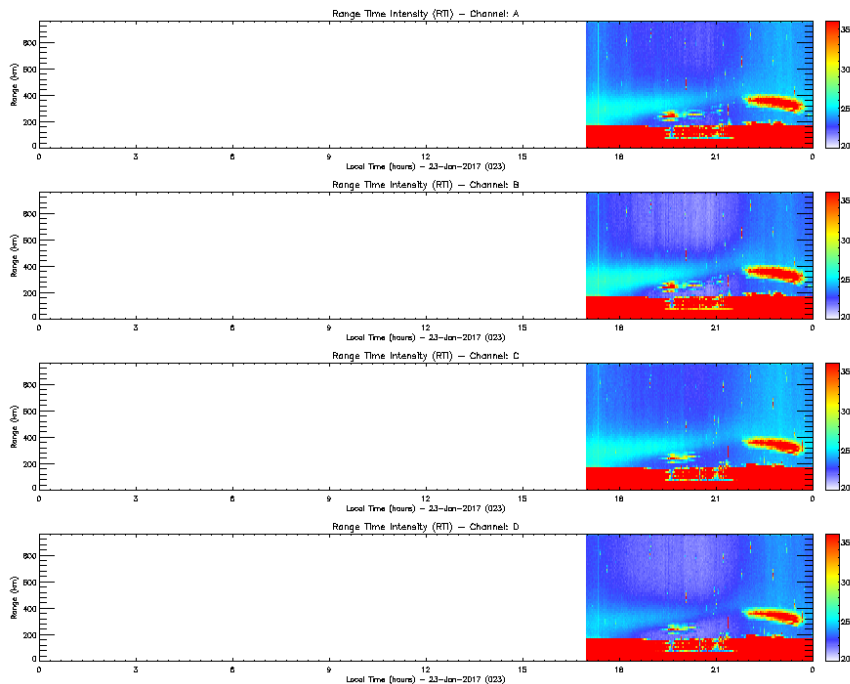
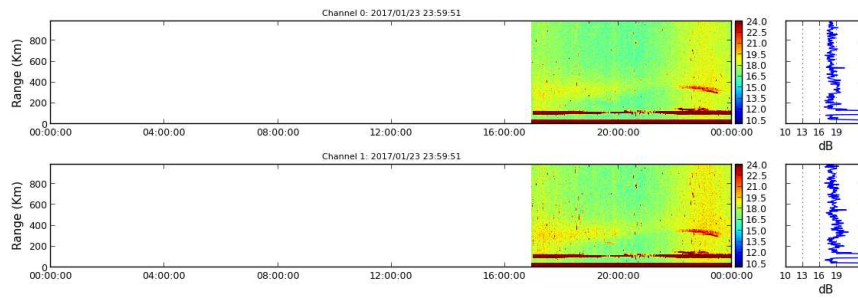
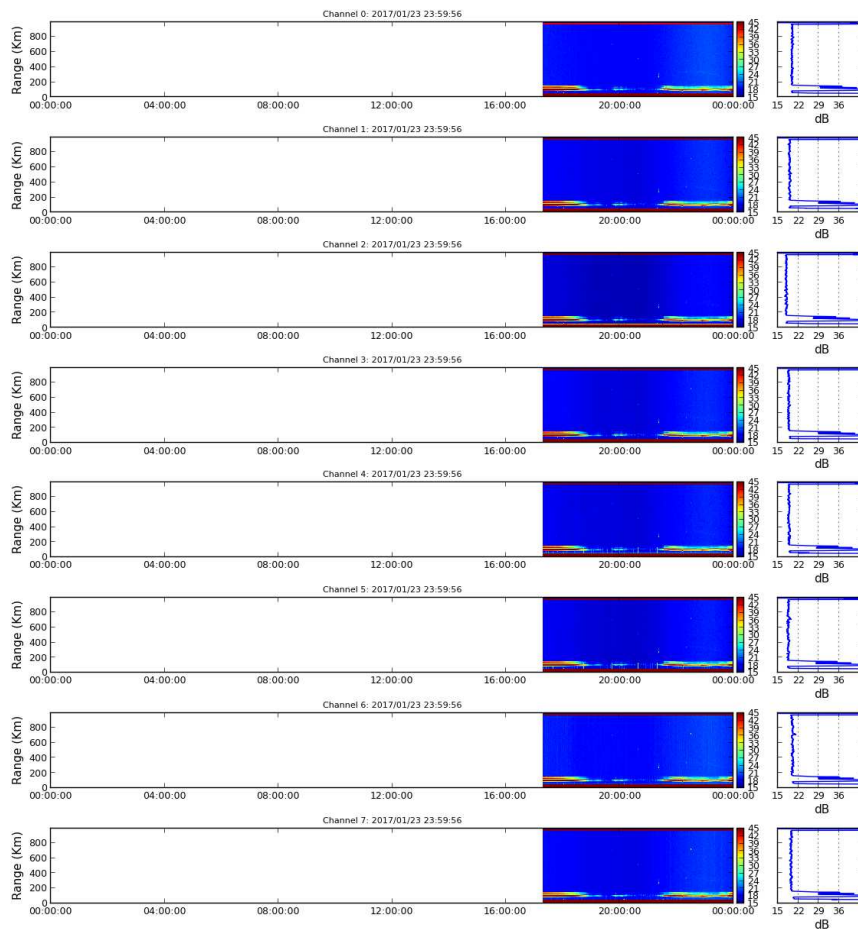


Figure 1.Rti EW\_DRIFT 2017-01-23.



**Figure 2. Rti FARADAY 2017-01-23.**



**Figure 3. RTI IMAGING 2017-01-23.**

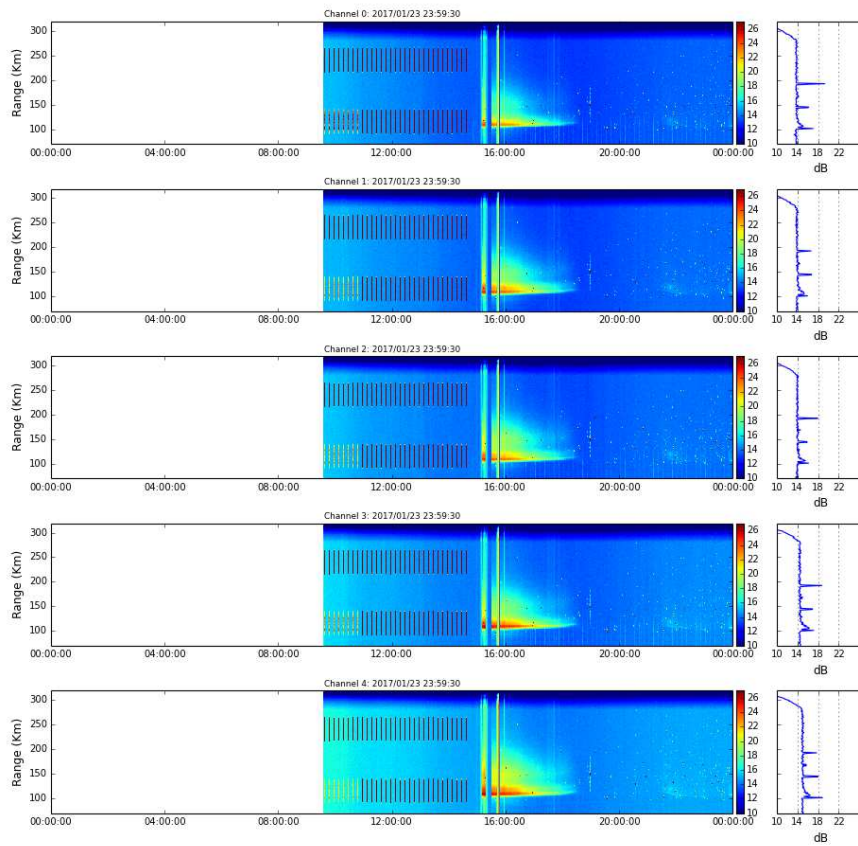


Figure 4. Rti JASMET 2017-01-23.

Drifts obtained:

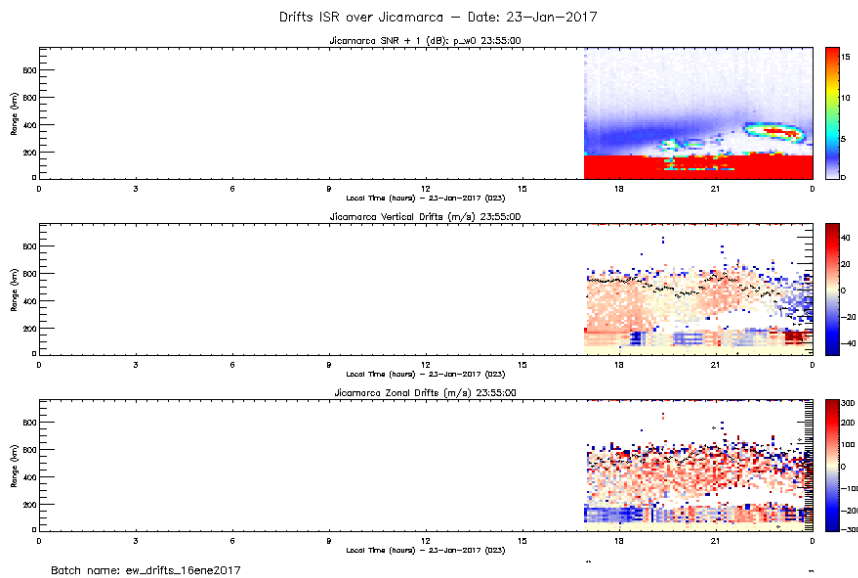


Figure 5. Drifts 2017-01-23.

January, 24:

\_ Spread F from 19 to 24 hours.

\_ % operation/24h: 100.

Log:

\_ 24 Jan 06:00 Imaging is off.

\_ 24 Jan 09:20 to 11;13 Jasmnet tests.

\_ 24 Jan 17:20 Imaging is on.

\_ 24 Jan 18:40 Jasmnet restart.

Staff in charge

00-08: A. Belleza. 08-20: K. Kuyeng. 20-24: P. Córdor.

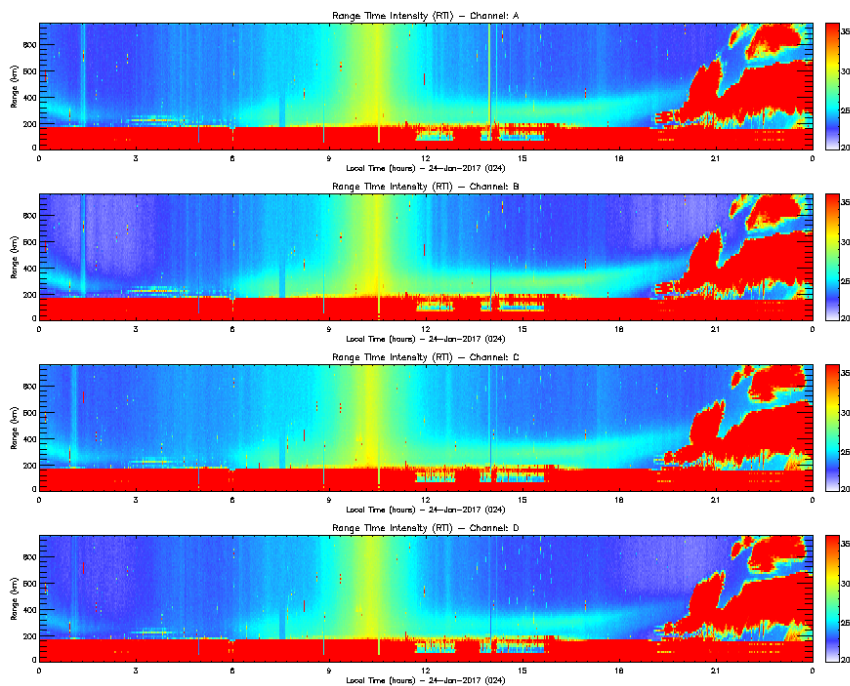


Figure 6. Rti EW\_DRIFT 2017-01-24.

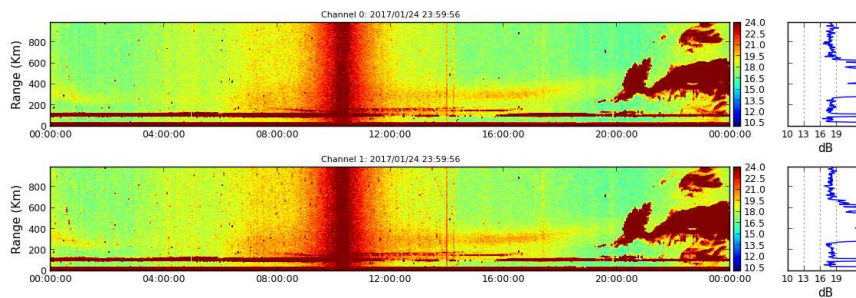


Figure 7. Rti FARADAY 2017-01-24.

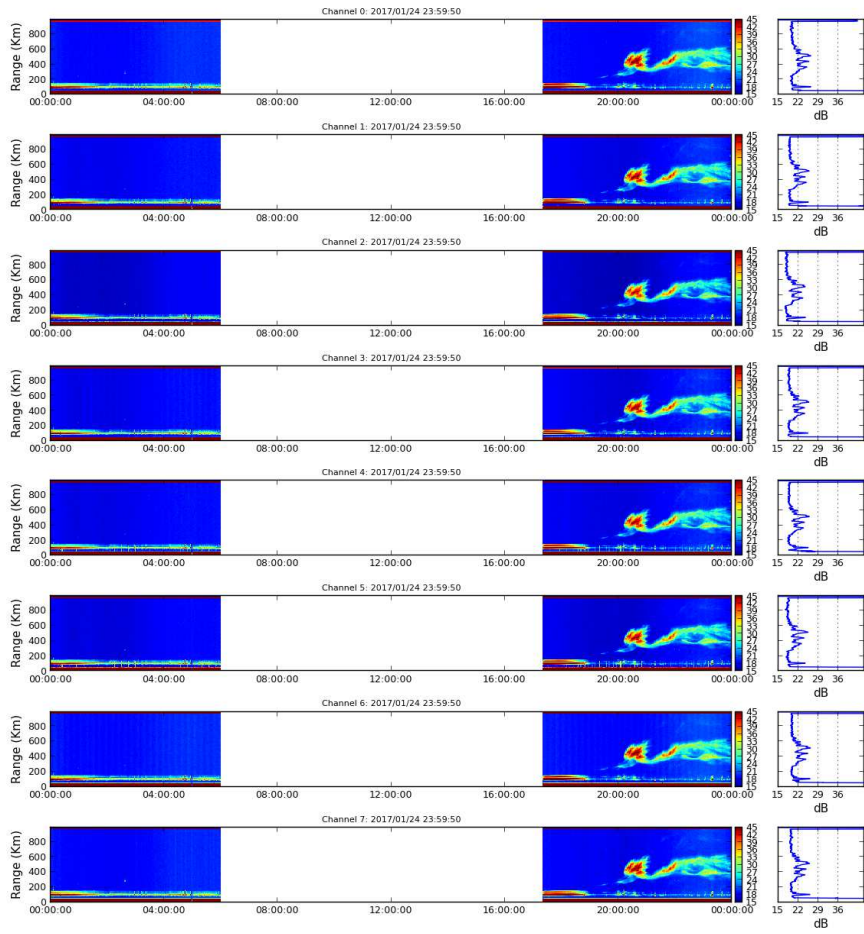


Figure 8. Rti IMAGING 2017-01-24.

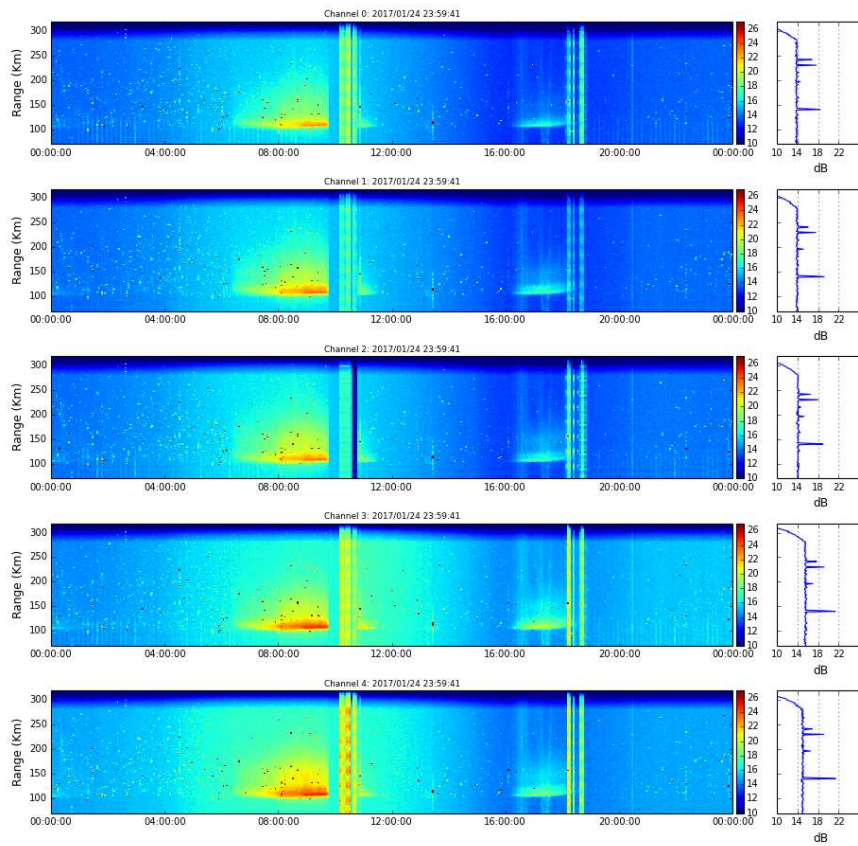


Figure 9. Rti JASMET 2017-01-24.

Drifts obtained:

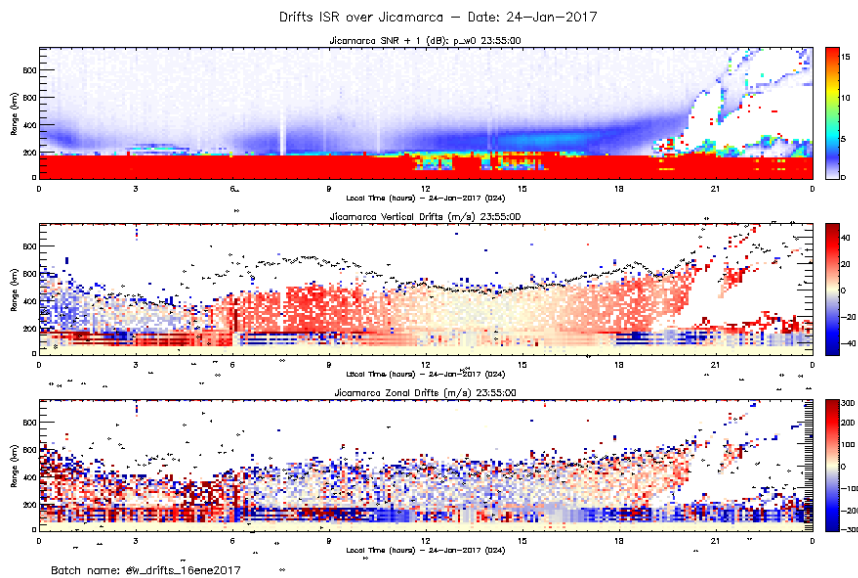


Figure 10. Drifts 2017-01-24.

January, 25:

\_ Spread F: strong from 0 to 6 and weak from 19 to 24 hours.

\_ % operation/24h: 100.

Log:

\_ 25 Jan 06:10 Imaging is off.

\_ 25 Jan 11:00 Faraday power off for 5 minutes.

\_ 25 Jan 12:00 Jasmet restart.

Staff in charge:

00-08: P. Córdor. 08-20: D. Lume. 20-24: K. Kuyeng.

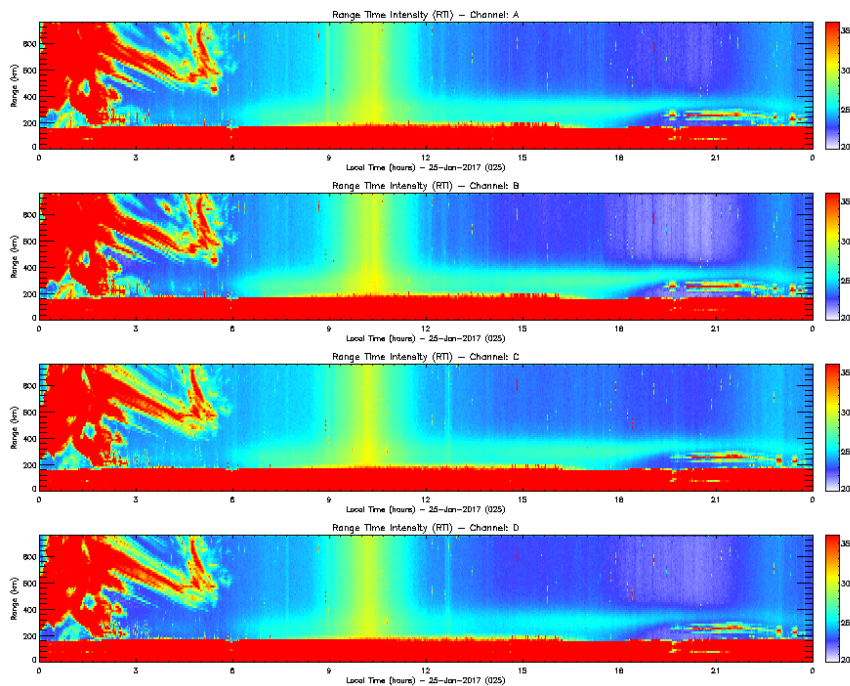


Figure 11. Rti EW\_DRIFT 2017-01-25.

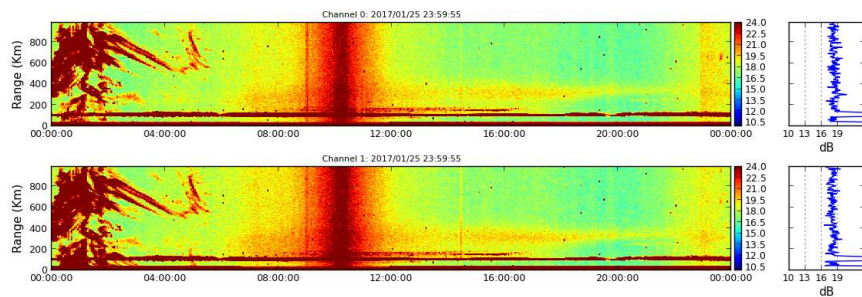


Figure 12. Rti FARADAY 2017-01-25.

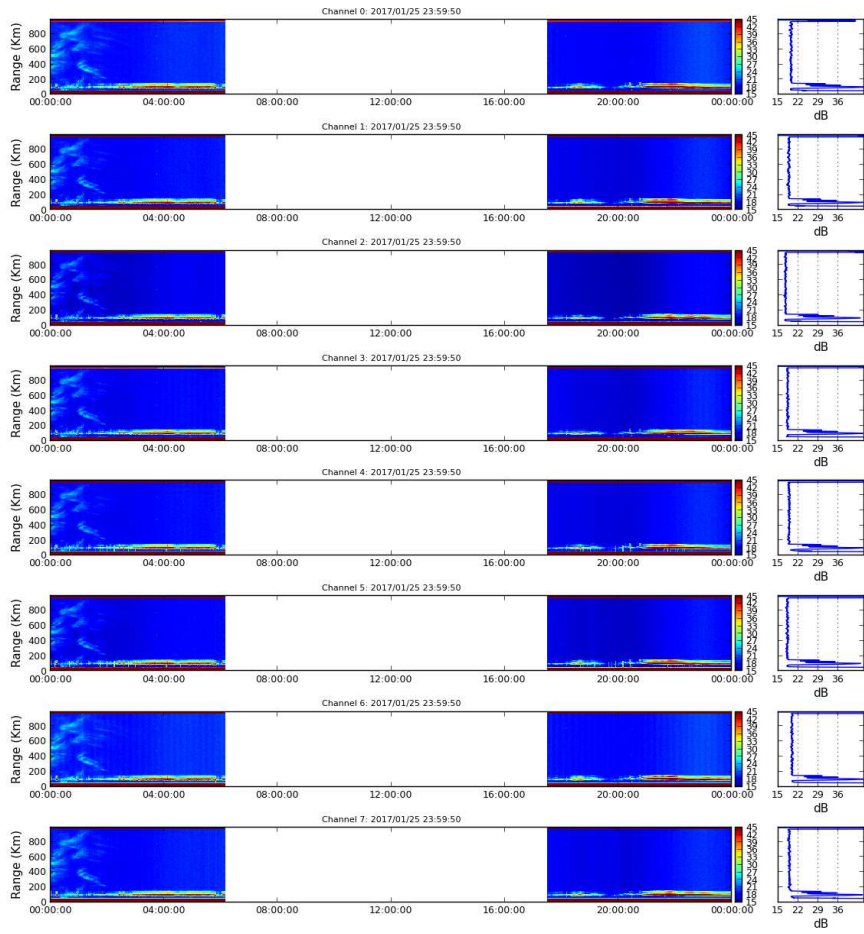


Figure 13. Rti IMAGING 2017-01-25.



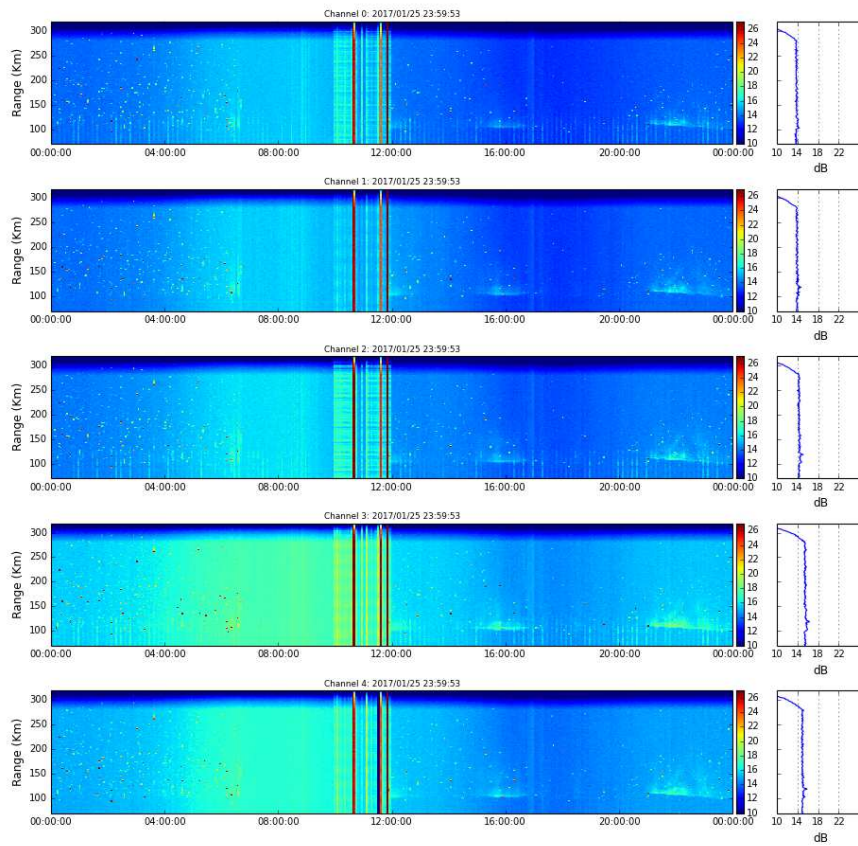


Figure 14. Rti JASMET 2017-01-25.

Drifts obtained:

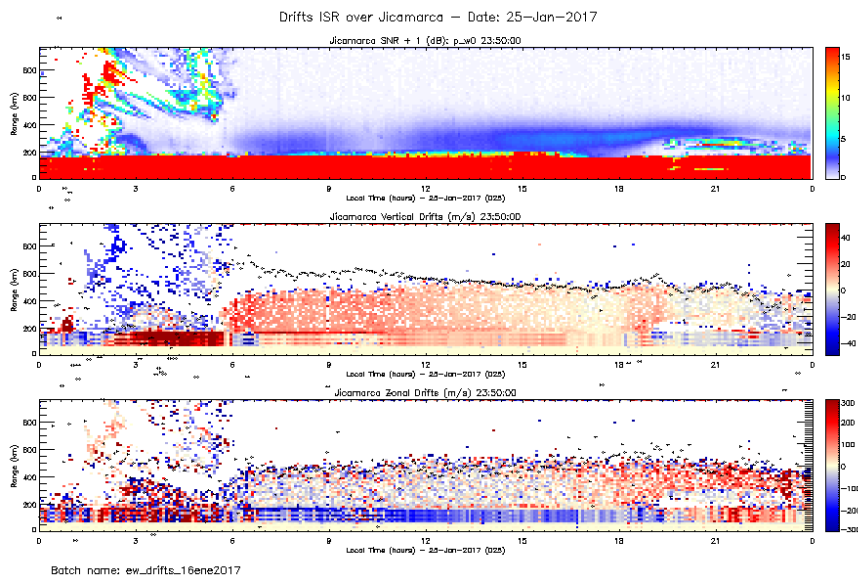


Figure 15. Drifts 2017-01-25.

January, 26:

\_ Problem with transmitter from 12 to 15 hours.

\_ Spread F from 19 to 24 hours.

Log:

\_ 26 Jan 06:02 Imaging on.

\_ 26 Jan 10:00 Transmitter is off for change of power switches.

\_ 26 Jan 10:15 Transmitter on.

\_ 26 Jan 12:50 Transmitter off for a problem.

\_ 26 Jan 14:33 Transmitter on.

\_ 26 Jan 17:26 Imaging on.

\_ 26 Jan 18:05 Interference detected on Jasmnet channels 0 and 3, also in Imaging channel 7.

\_ % operation/24h: 90.8

Staff in charge:

00-08: K. Kuyeng. 08-20: J. Verastegui. 20-24: A. Belleza.

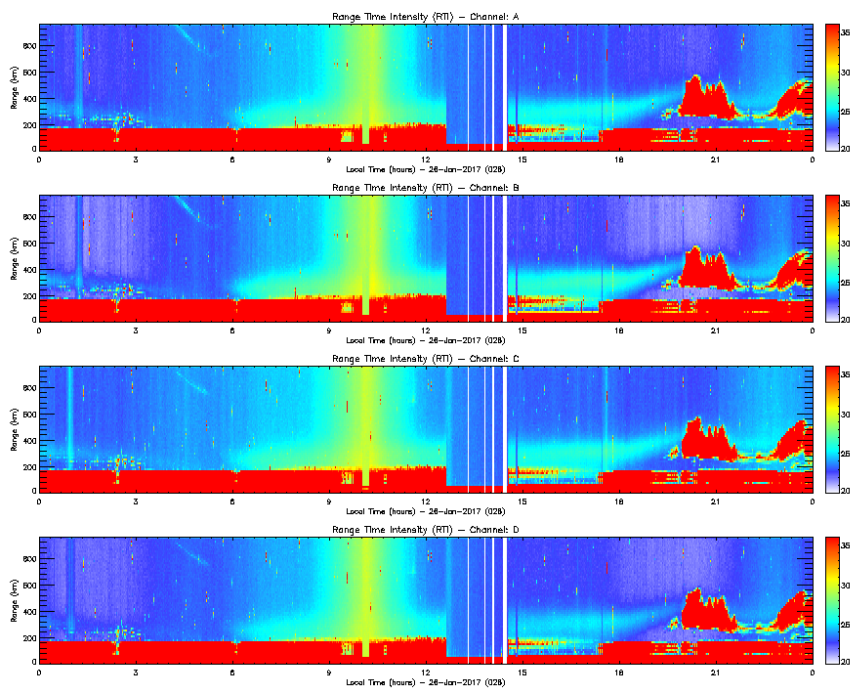


Figure 16. Rti EW\_DRIFT 2017-01-26.

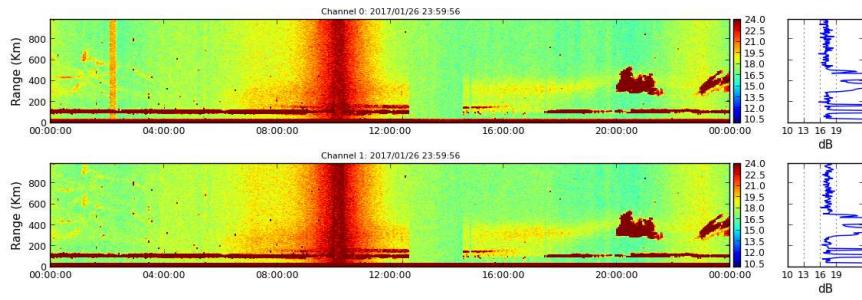


Figure 17. Rti FARADAY 2017-01-26.

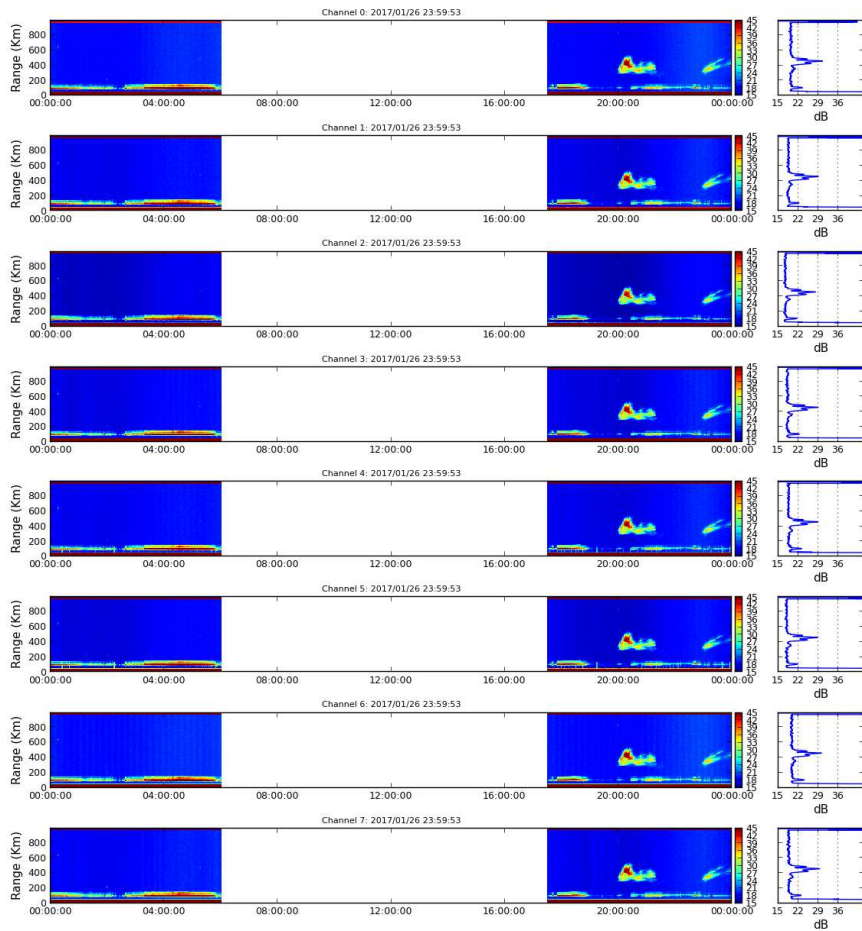


Figure 18. Rti IMAGING 2017-01-26.

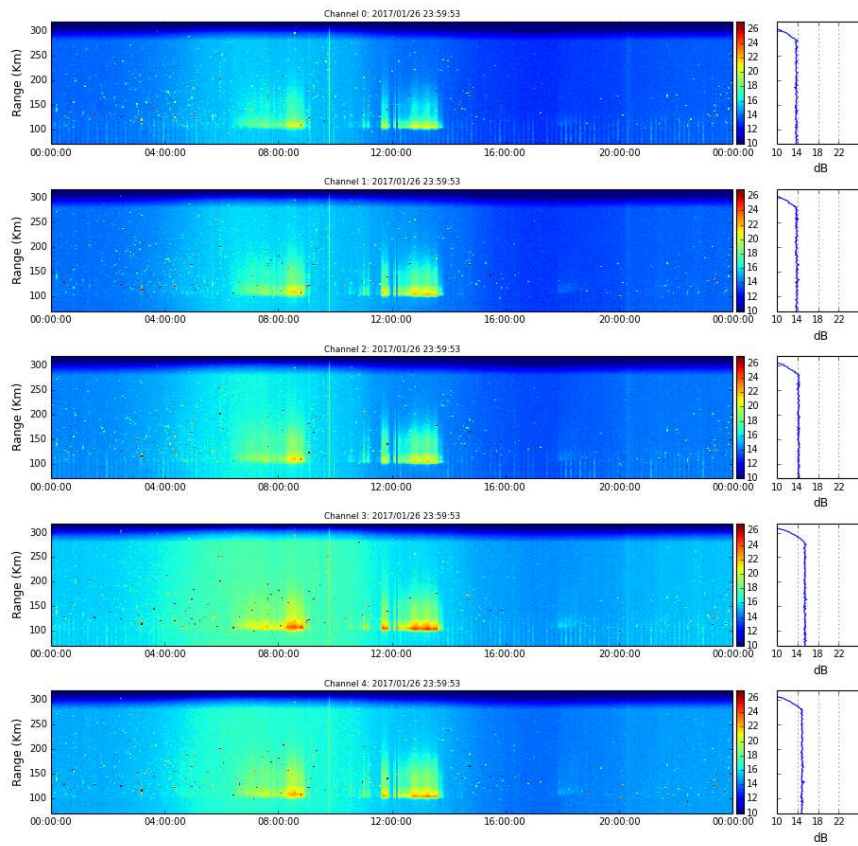


Figure 19. Rti JASMET 2017-01-26.

Drifts obtained:

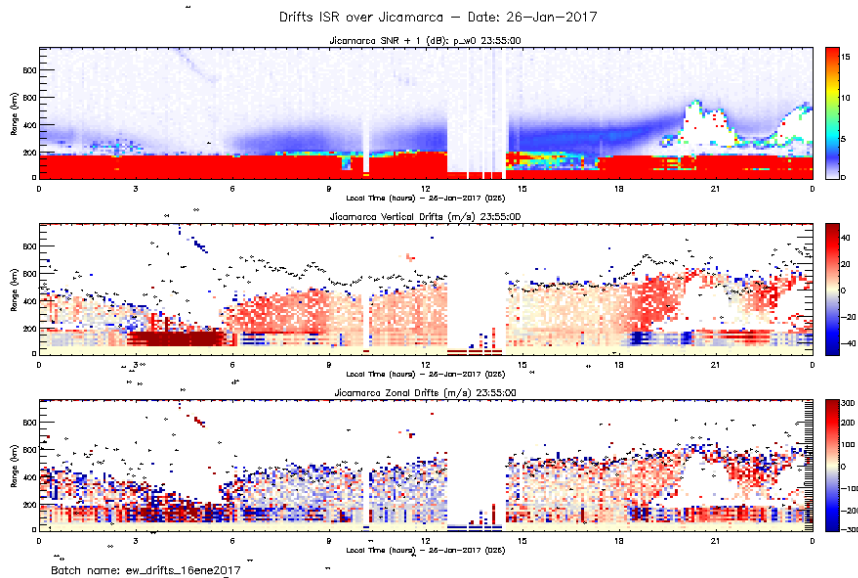


Figure 20. Drifts 2017-01-26.

January, 27:

\_ Spread F from 0 to 1 hours.

Log:

\_ 27 Jan 06:02 Imaging off.

\_ 27 Jan 08:01 End of Experiment.

\_ % operation/24h: 100.

Staff in charge:

00-08: A. Belleza.

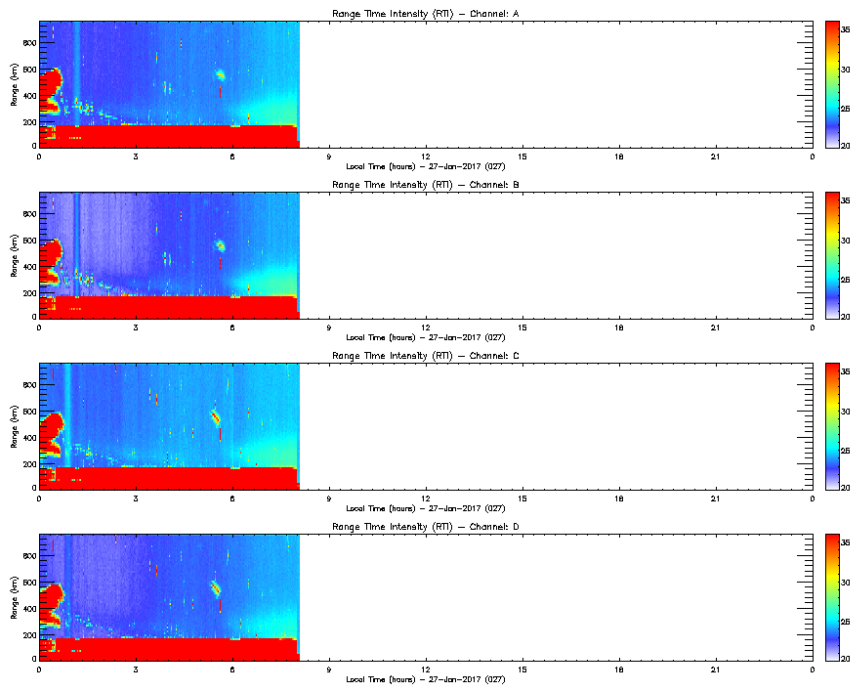


Figure 21. Rti EW\_DRIFT 2017-01-27.

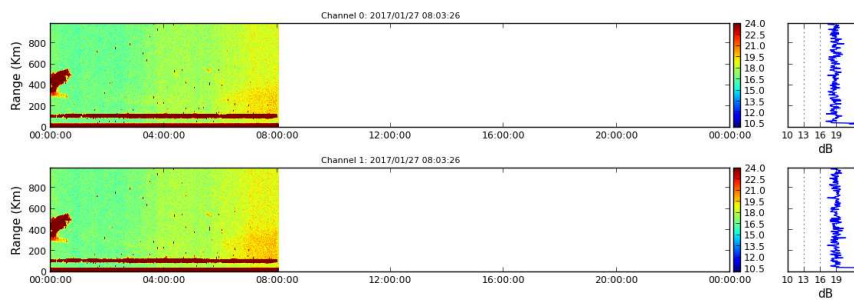


Figure 22. Rti FARADAY 2017-01-27.

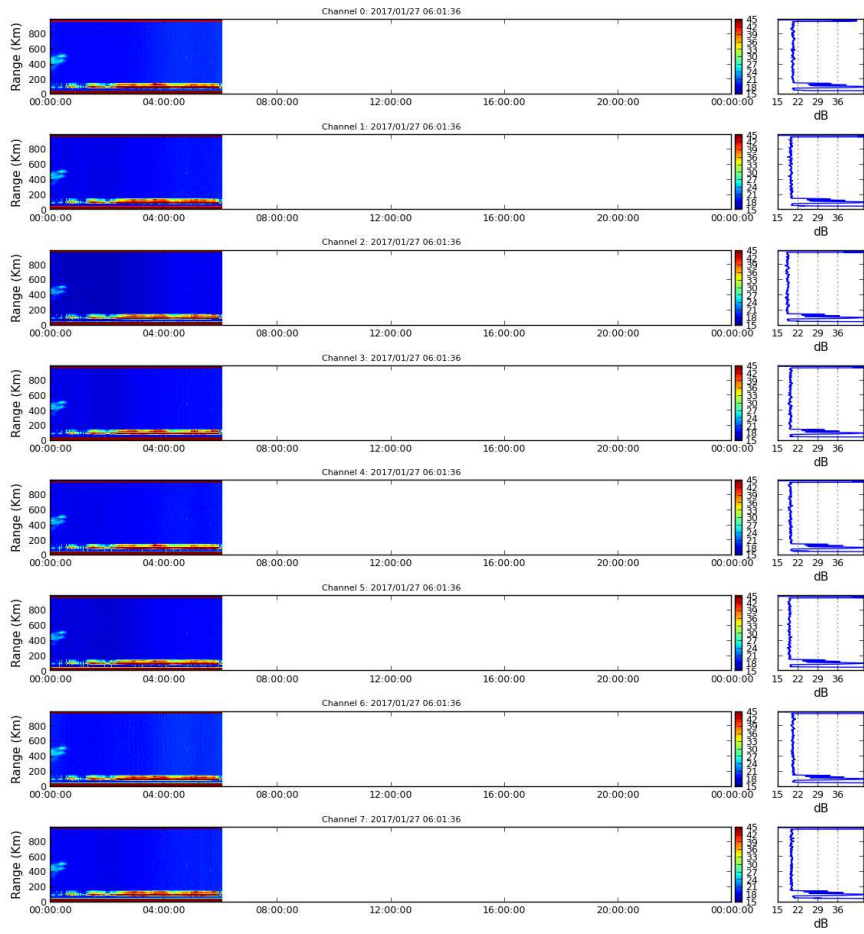


Figure 23. Rti IMAGING 2017-01-27.

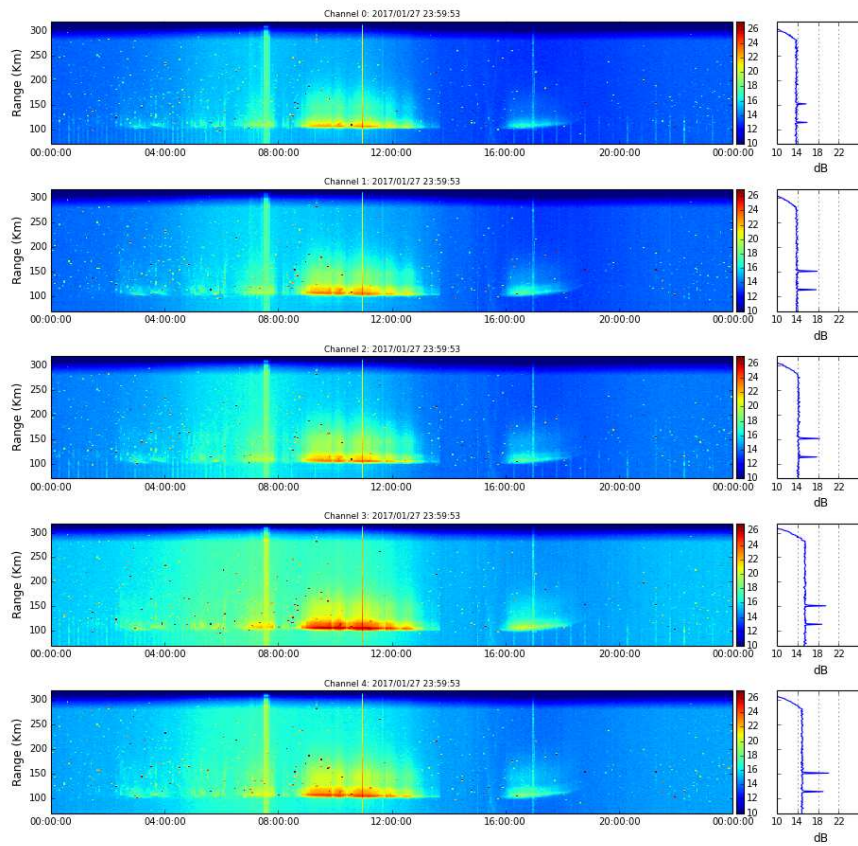


Figure 24. Rti JASMET 2017-01-27.

Drifts obtained:

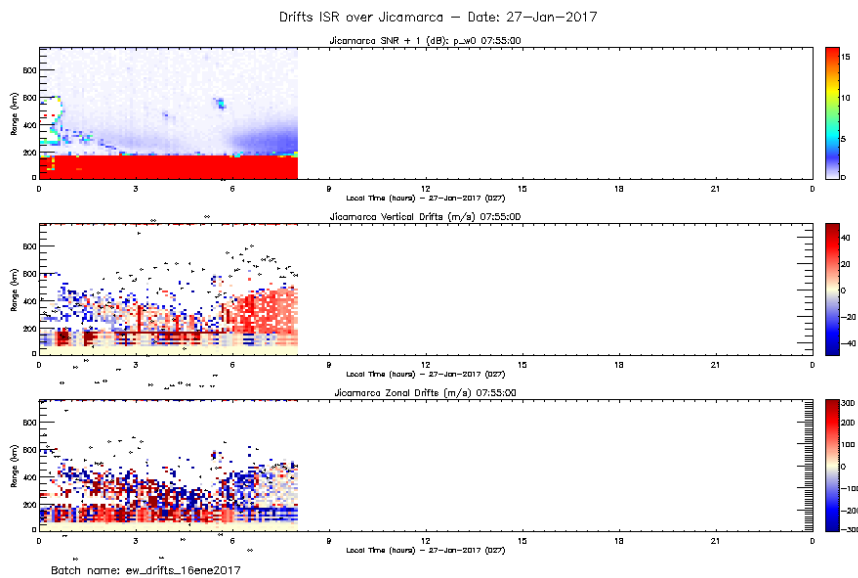


Figure 25. Drifts 2017-01-27.