

January, 30:

_ Spread F from 21 to 24 hours.

Log:

_ 30 Jan 07:52 Start of experiment.

_ 30 Jan 09:00 and 15 hours problem with transmitter for little minutes.

_ 30 Jan 09:45 Test of filter at channel C of Jasmnet.

_ 30 Jan 17:35 Imaging on.

_ % operation/24h: 99.8

Staff in charge:

07-20: I. Manay. 20-24: A. Belleza.

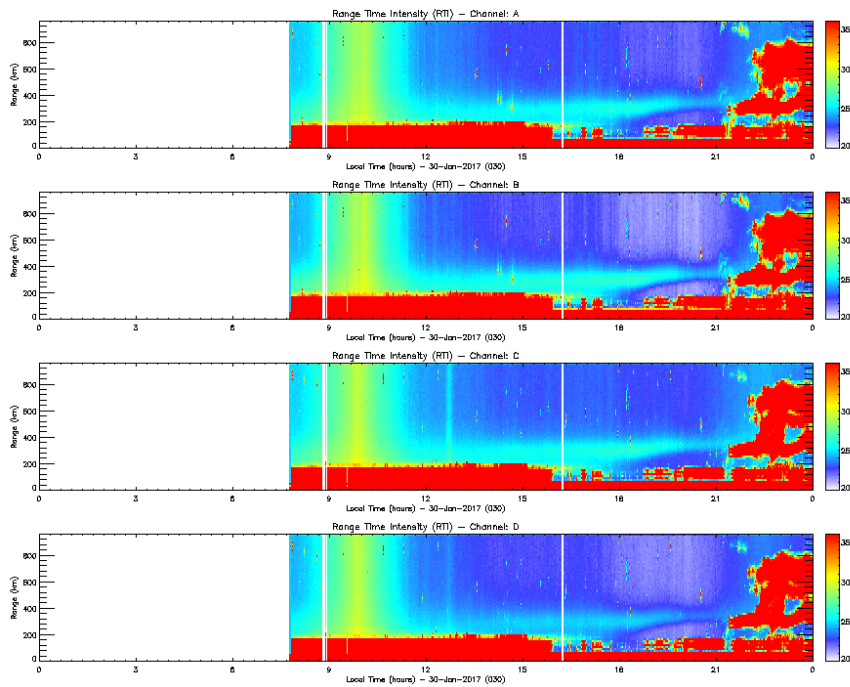


Figure 26. Rti EW_DRIFT 2017-01-30.

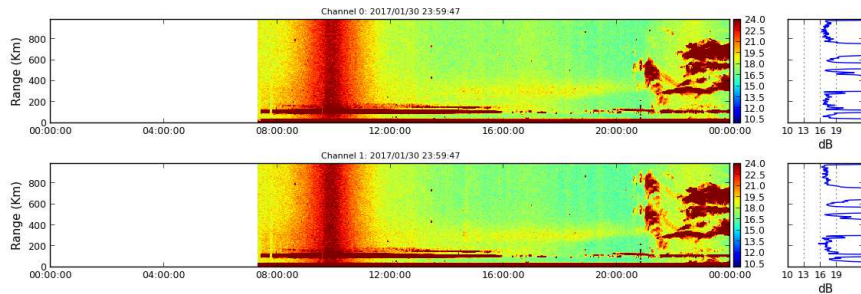


Figure 27. Rti FARADAY 2017-01-30.

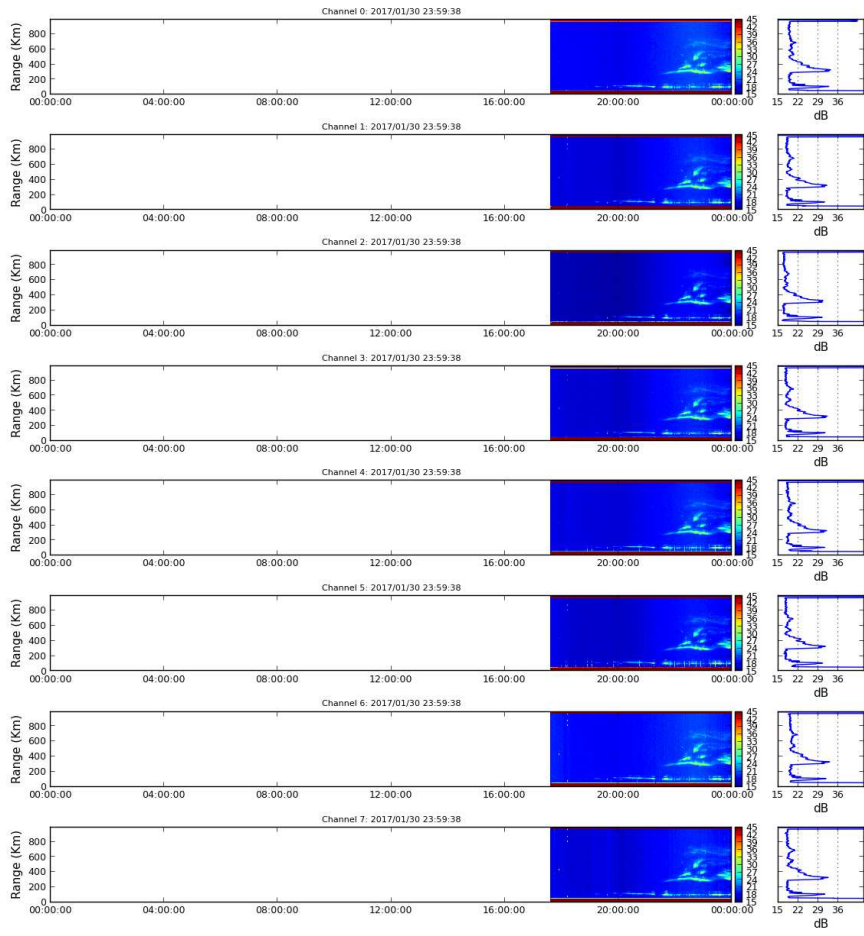


Figure 28. Rti IMAGING 2017-01-30.

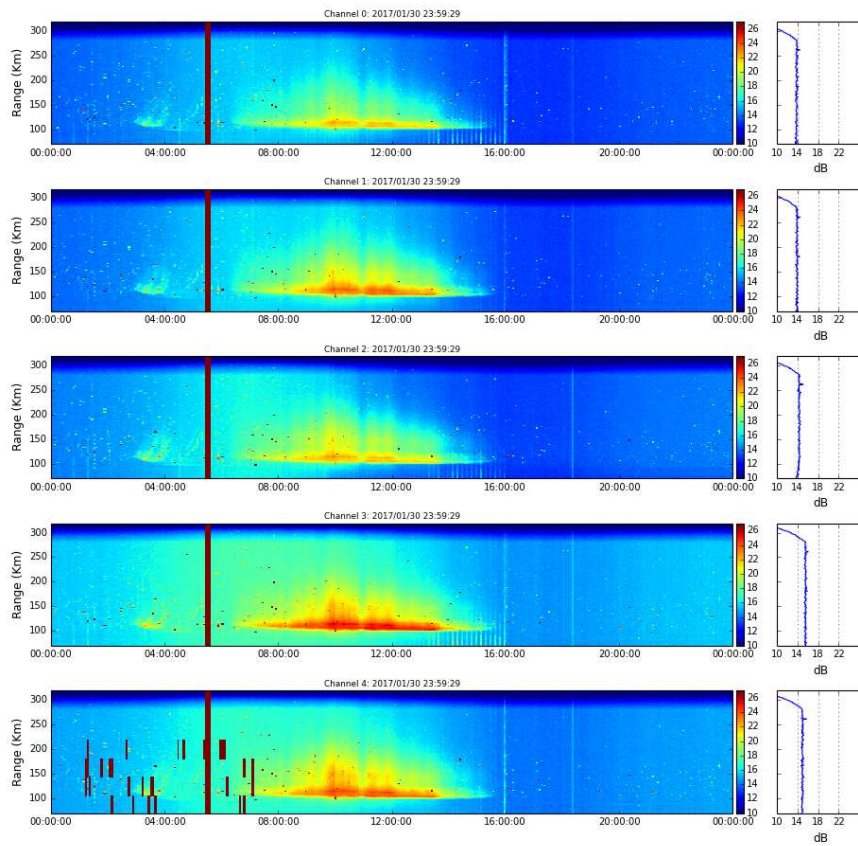


Figure 29. Rti JASMET 2017-01-30.

Drifts obtained:

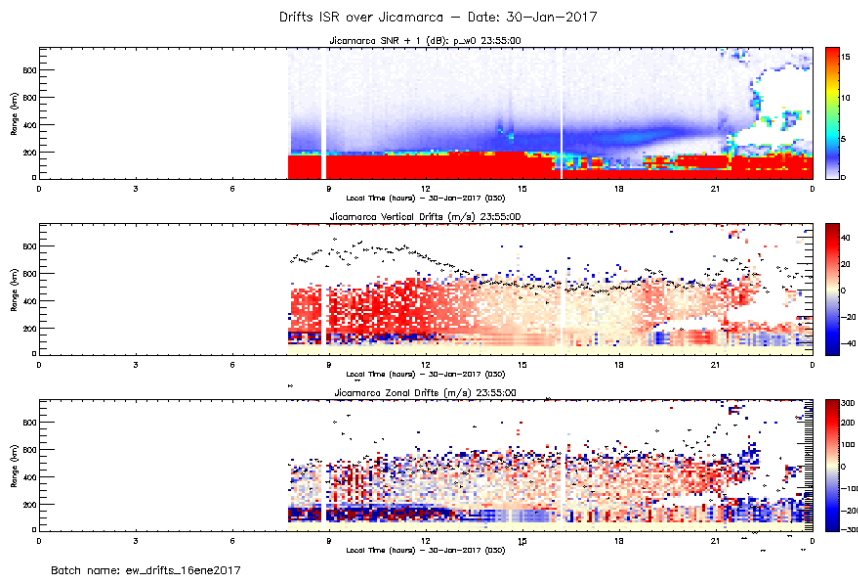


Figure 30. Drifts 2017-01-30.

January, 31:

_ Problems from 15 to 17 hours.

_ Spread F from 0 to 6 hours.

Log:

_ 31 Jan 15:00 Transmitter off.

_ % operation/24h: 93.7

Staff in charge:

00-08: A. Belleza. 08-20: K. Kuyeng. 20-24: K. Kuyeng.

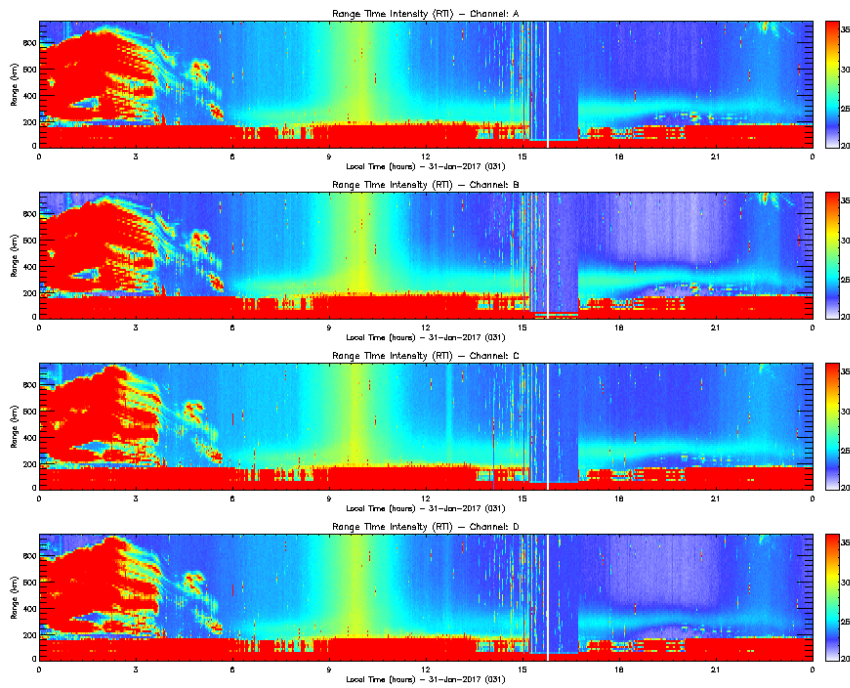


Figure 31. Rti EW_DRIFT 2017-01-31.

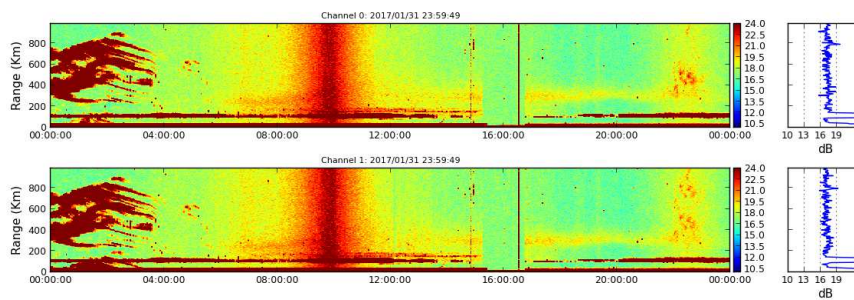


Figure 32. Rti FARADAY 2017-01-31.

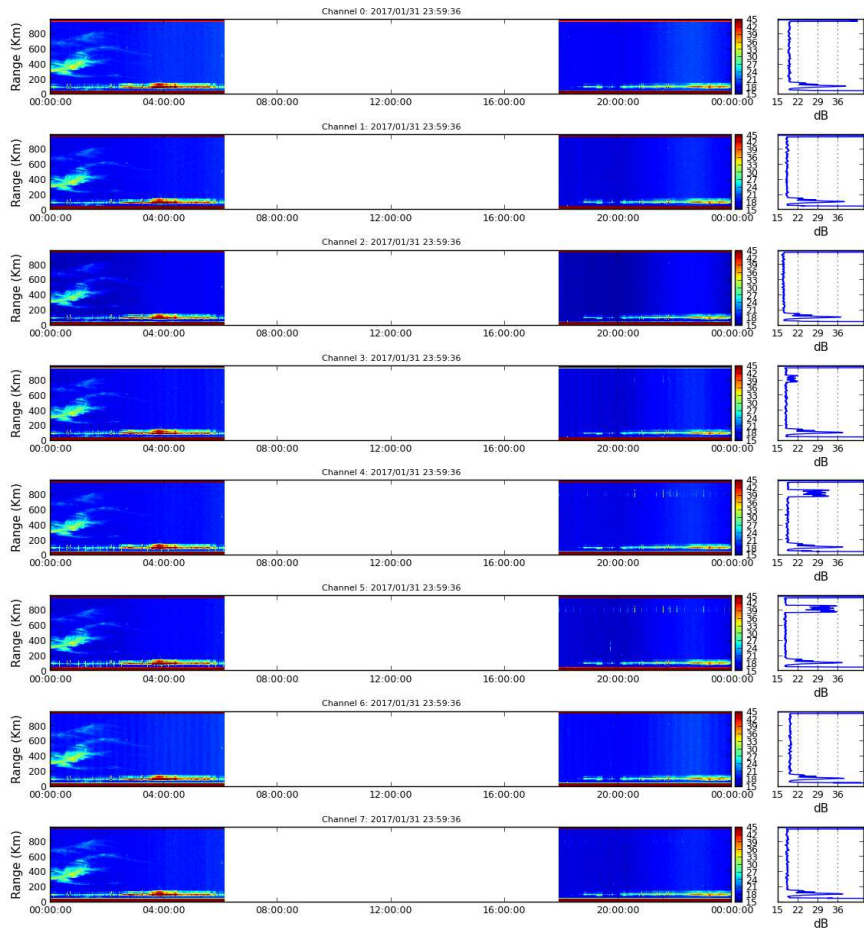


Figure 33. Rti IMAGING 2017-01-31.

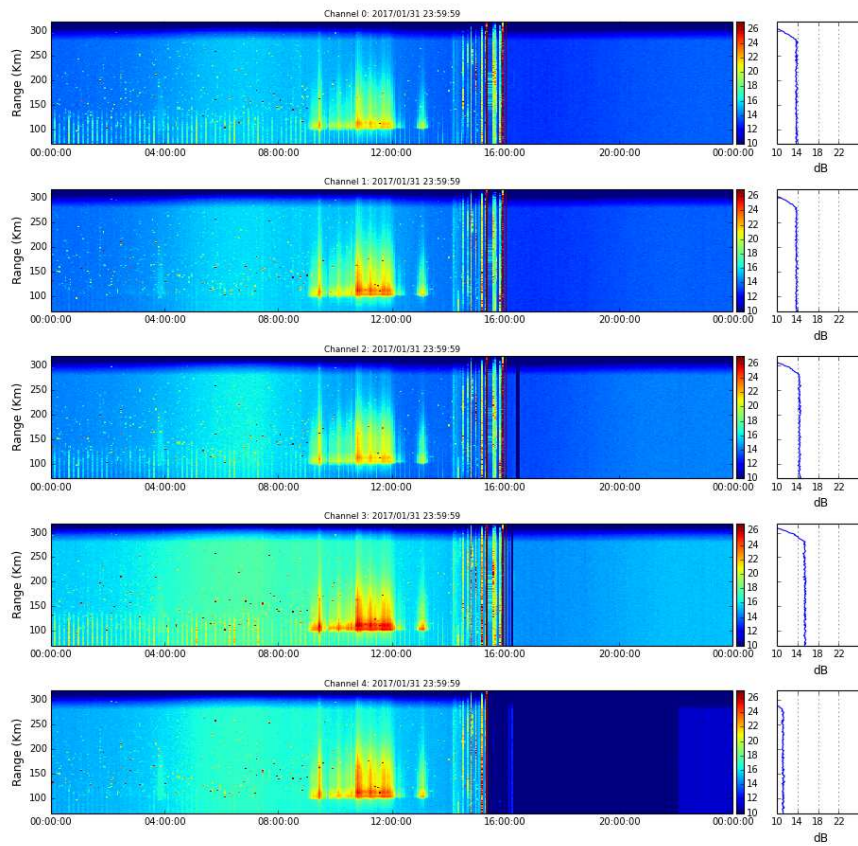


Figure 34. Rti JASMET 2017-01-31.

Drifts obtained:

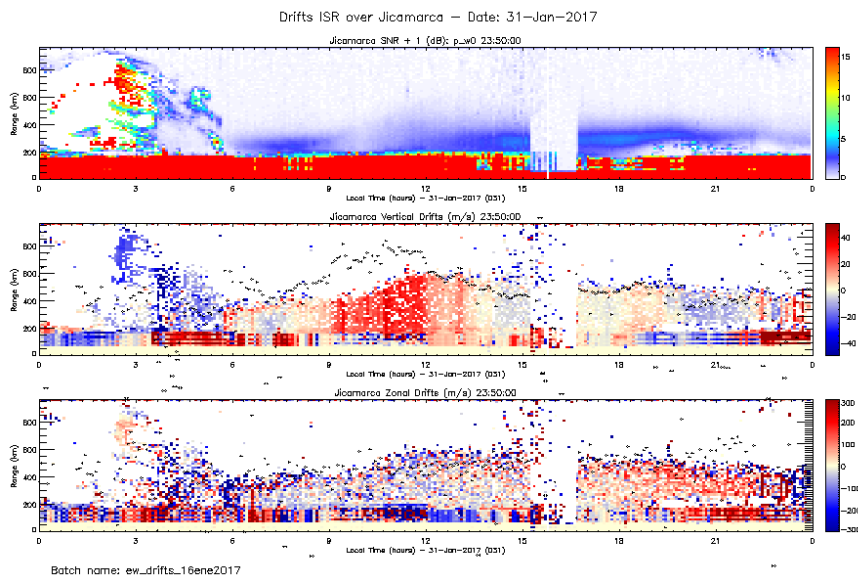


Figure 35. Drifts 2017-01-31.

February, 01:

_ Problem with transmitter from 05 to 12 hours.

_ Spread F from 19 to 24 hours.

Log:

_ 01 Feb 05:00 Problem with transmitter and is on at 12 hours.

_ % operation/24h: 70.8

Staff in charge:

00-08: K. Kuyeng. 08-20: R. Yanque. 20-24: A. Belleza.

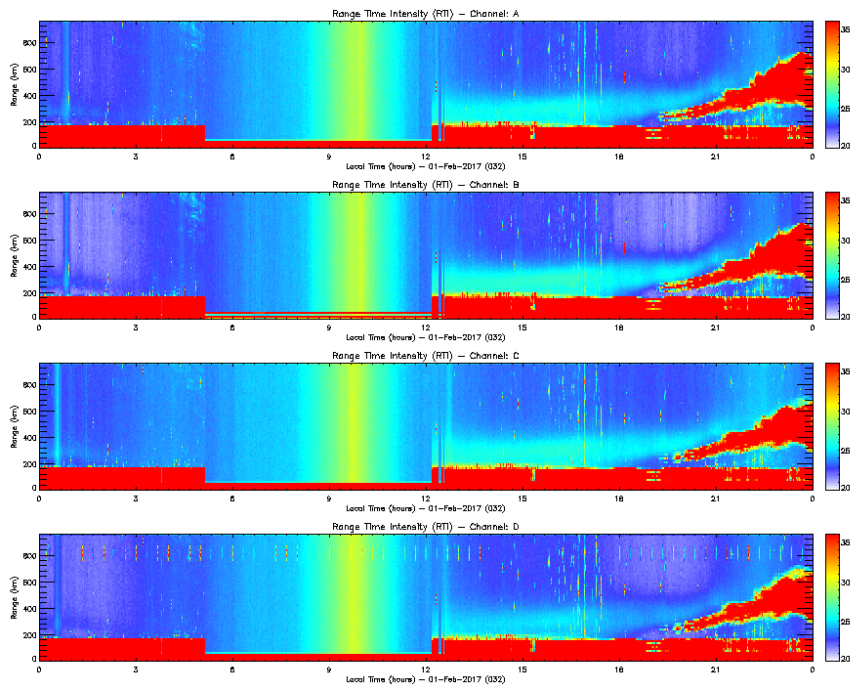


Figure 36. Rti EW_DRIFT 2017-02-01.

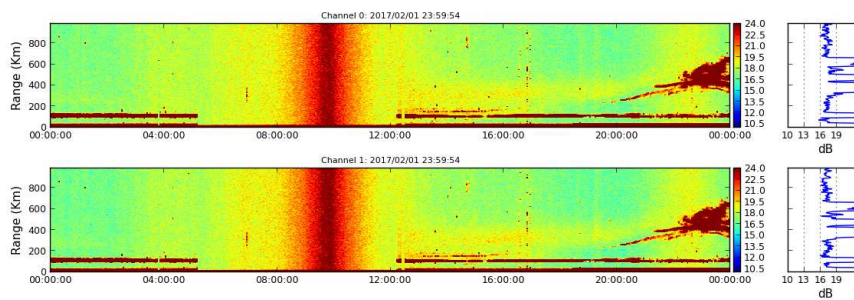


Figure 37. Rti FARADAY 2017-02-01.

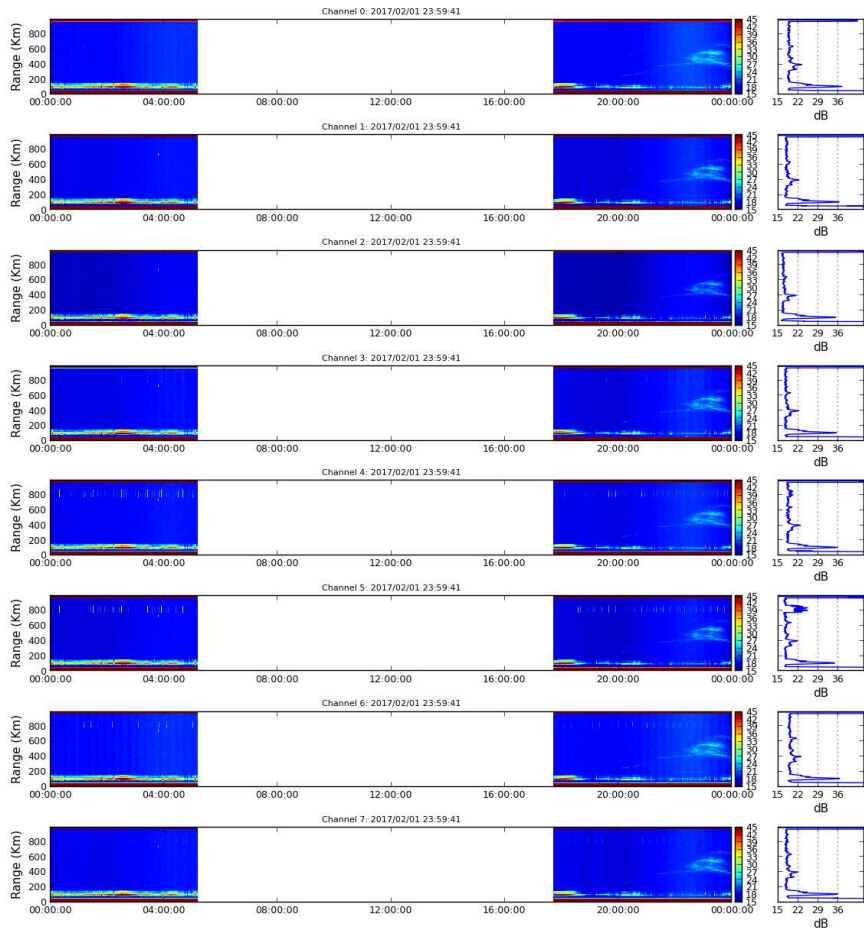


Figure 38. Rti IMAGING 2017-02-01.

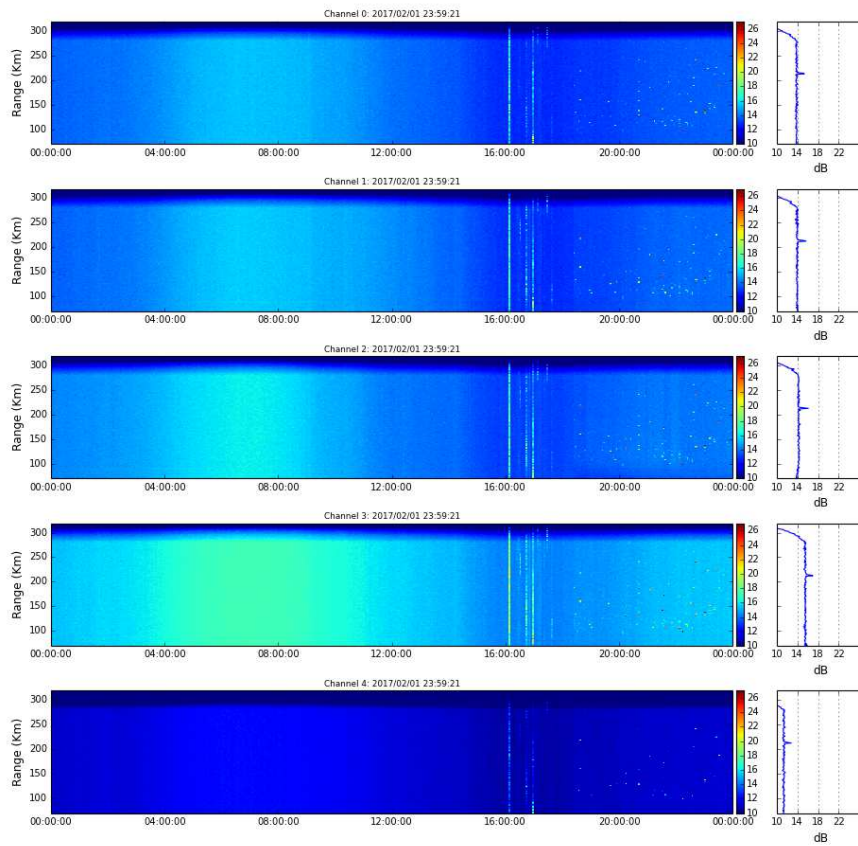


Figure 39. Rti JASMET 2017-02-01.

Drifts obtained:

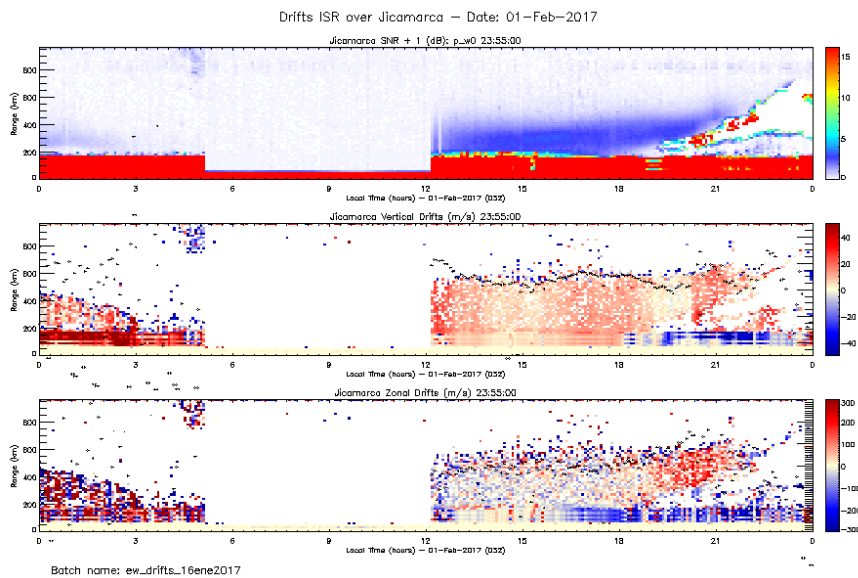


Figure 40. Drifts 2017-02-01.

February, 02:

_ Spread F from 0 to 6 and from 19 to 24 hours.

_ Problem with transmitter from 01:20, 02 to 03 and 22:30 hours.

_ Problem with pc Ares at 04 and 15 hours.

Log:

_ 02 Feb 03:59 and 15:50 Pc Ares restart.

_ 02 Feb 07:19 Imaging off.

_ 02 Feb 12:40 Low noise at Channel E of Jasmet.

_ 02 Feb 22:40 Instant backout.

_ 02 Feb 23:40 Jasmet is restarted.

_ % operation/24h: 88.9

Staff in charge:

00-08: A. Belleza. 08-20: I. Manay. 20-24: P. C6ndor.

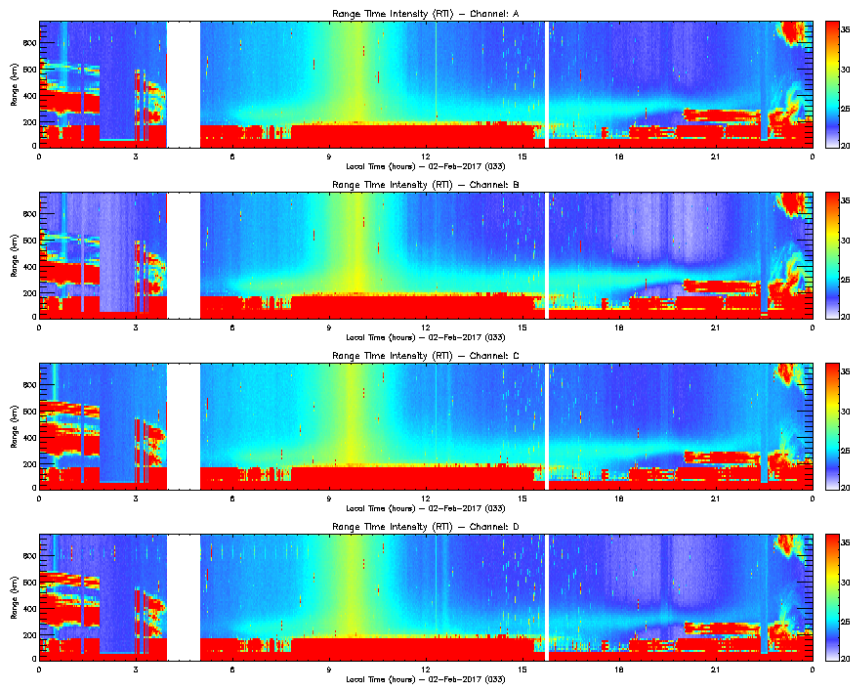


Figure 41. Rti EW_DRIFT 2017-02-02.

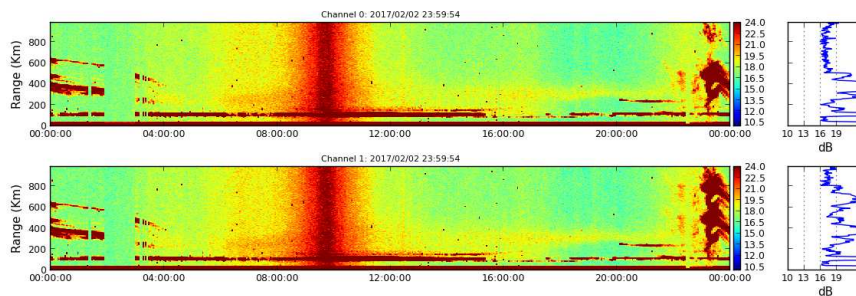


Figure 42. Rti FARADAY 2017-02-02.

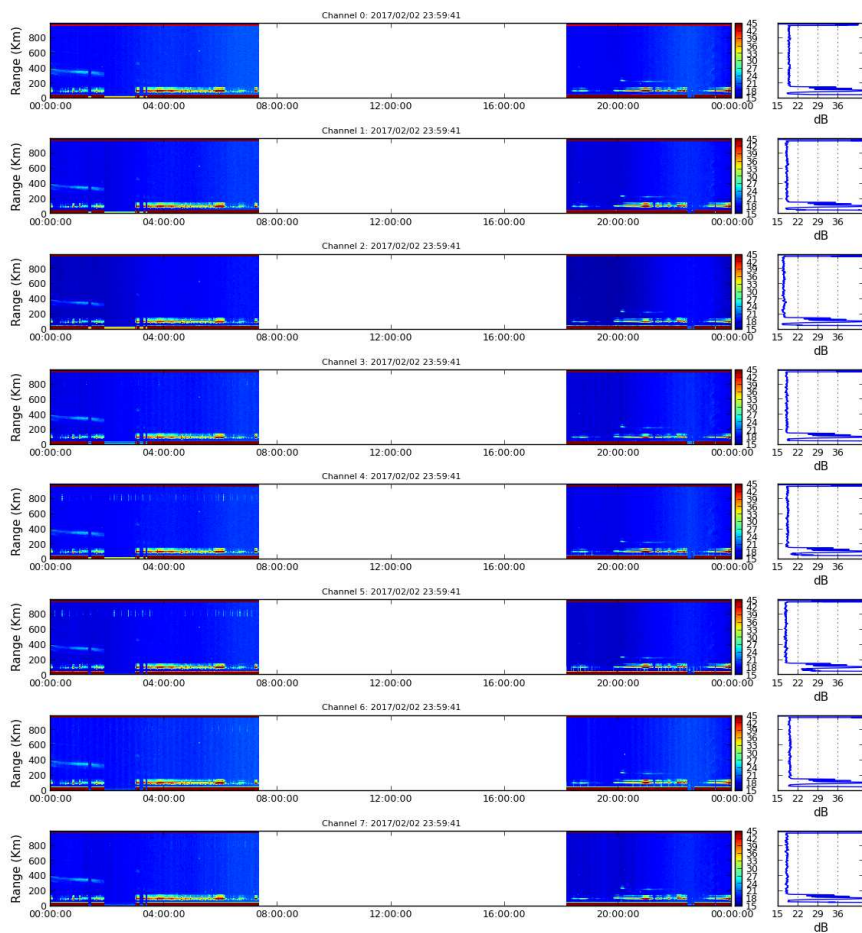


Figure 43. Rti IMAGING 2017-02-02.

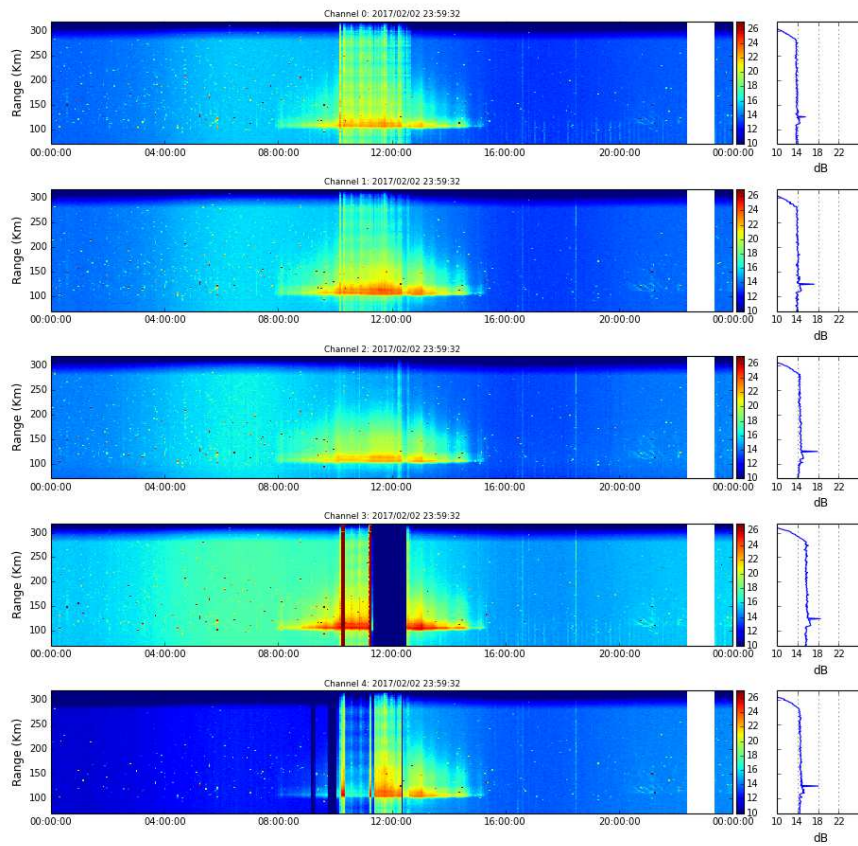


Figure 44. Rti JASMET 2017-02-02.

Drifts obtained:

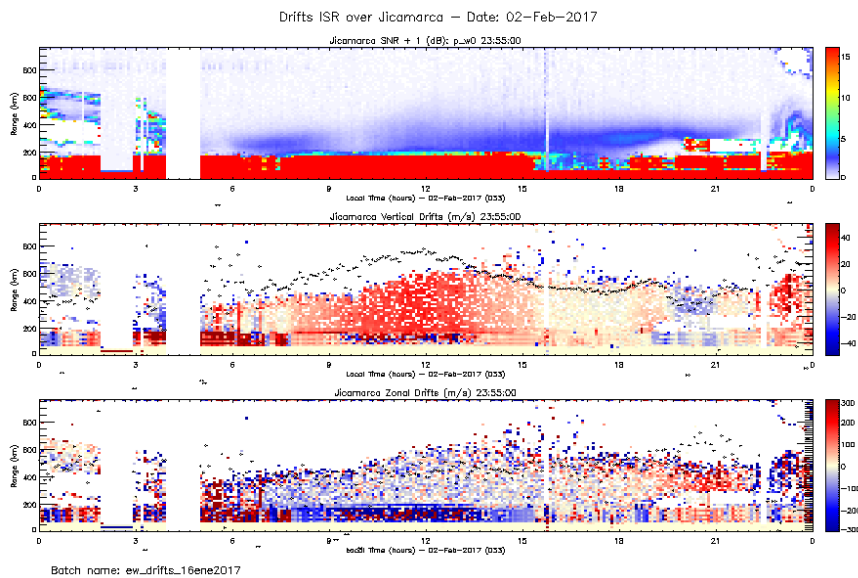


Figure 45. Drifts 2017-02-02.

February, 03:

_ Spread F from 0 to 6 hours.

Log:

_ 03 Feb 06:06 Imaging off.

_ 03 Feb 17:40 Imaging on.

_ % operation/24h: 100.

Staff in charge:

00-08: P. C3ndor. 08-20: K. Kuyeng. 20-24: A. Belleza.

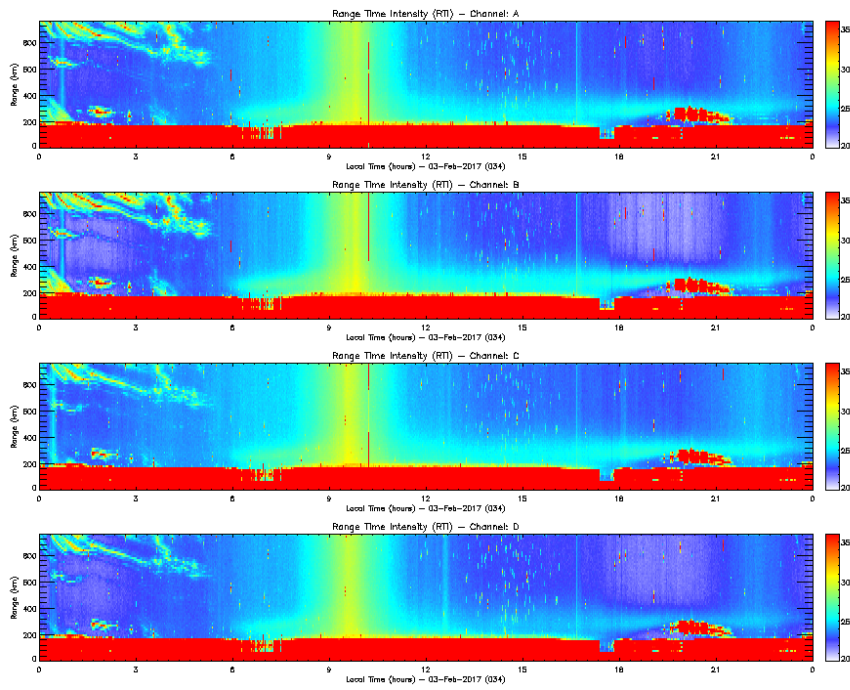


Figure 46. Rti EW_DRIFT 2017-02-03.

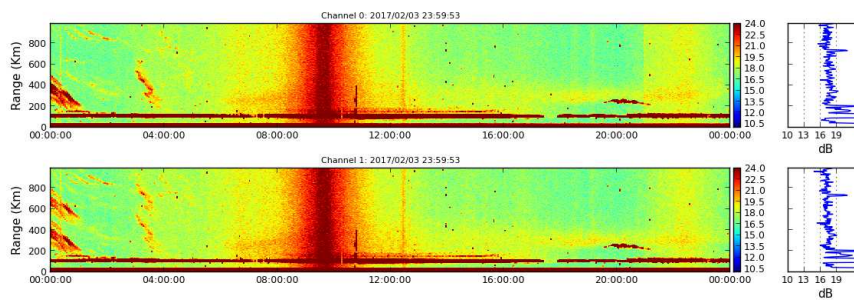


Figure 47. Rti FARADAY 2017-02-03.

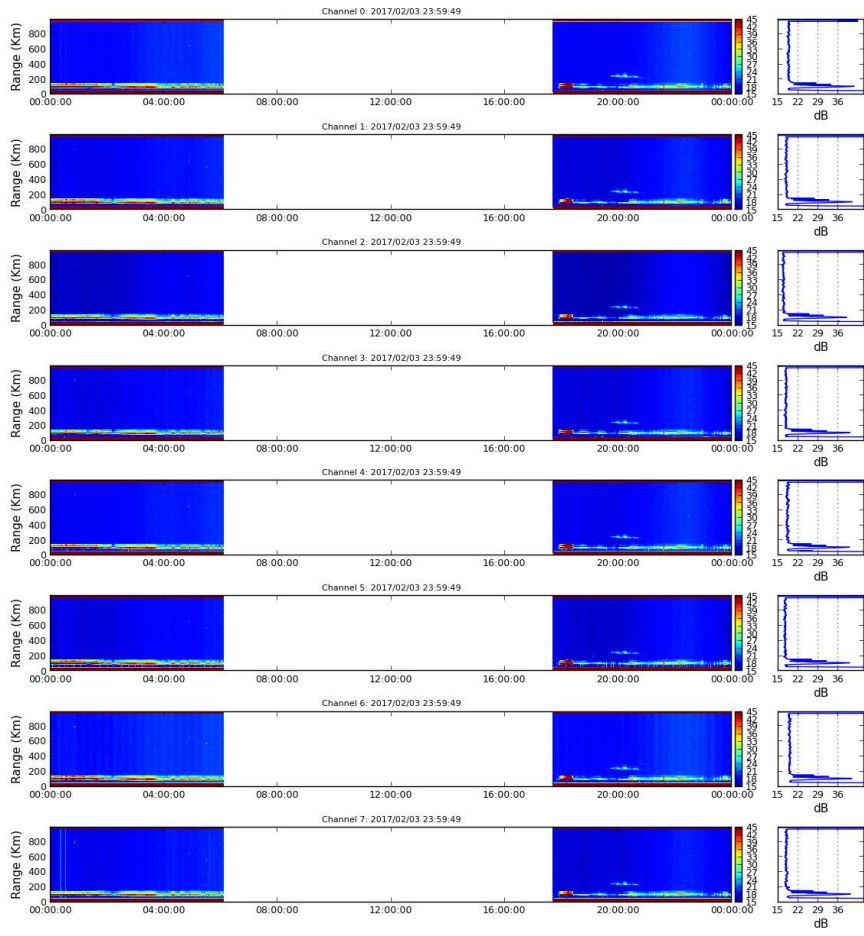


Figure 48. Rti IMAGING 2017-02-03.

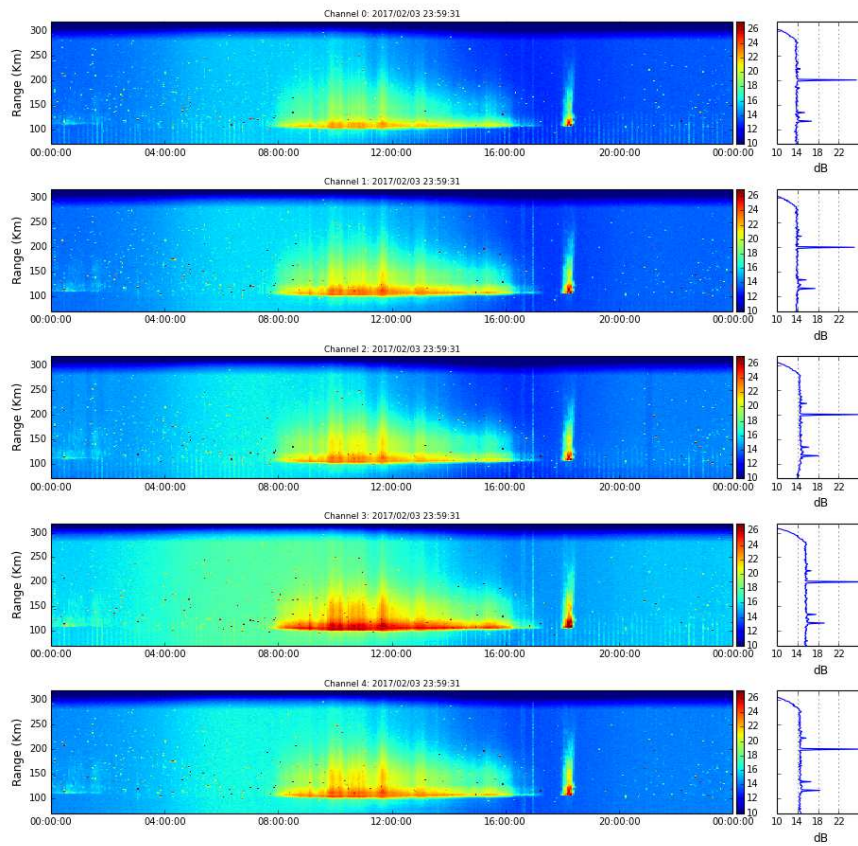


Figure 49. Rti JASMET 2017-02-03.

Drifts obtained:

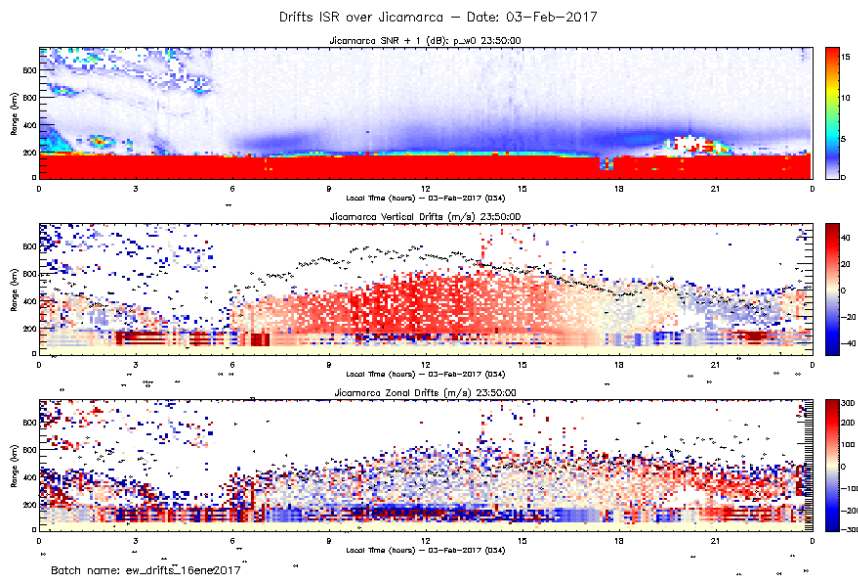


Figure 50. Drifts 2017-02-03.

February, 04:

_ Spread F from 0 to 6 hours.

Log:

_ 04 Feb 08:06 End of experiment.

_ % operation/24h: 100.

Staff in charge:

00-08: A. Belleza.

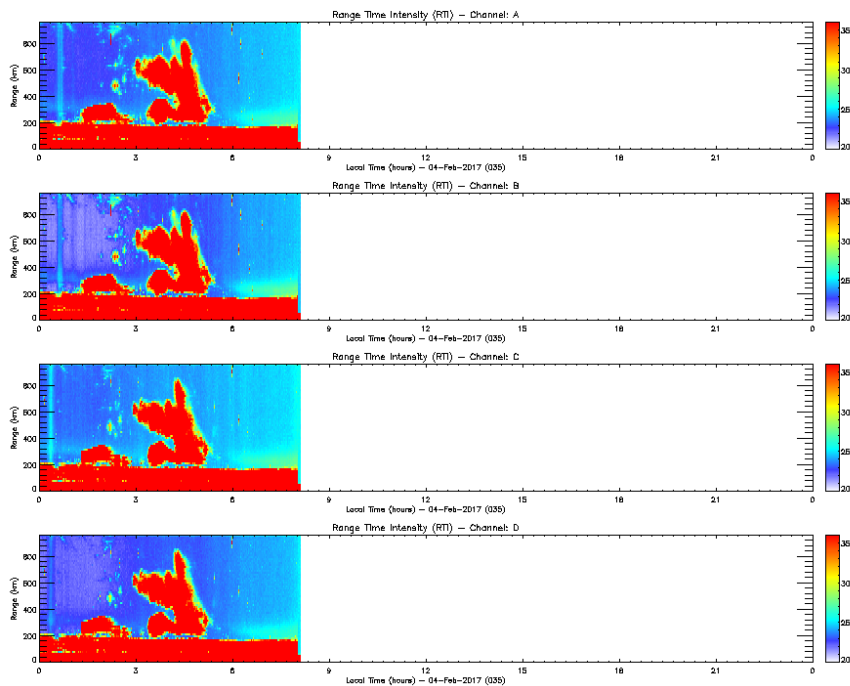


Figure 51. Rti EW_DRIFT 2017-02-04.

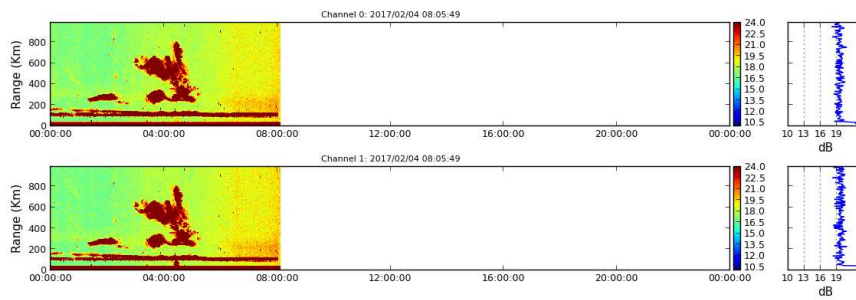


Figure 52. Rti FARADAY 2017-02-04.

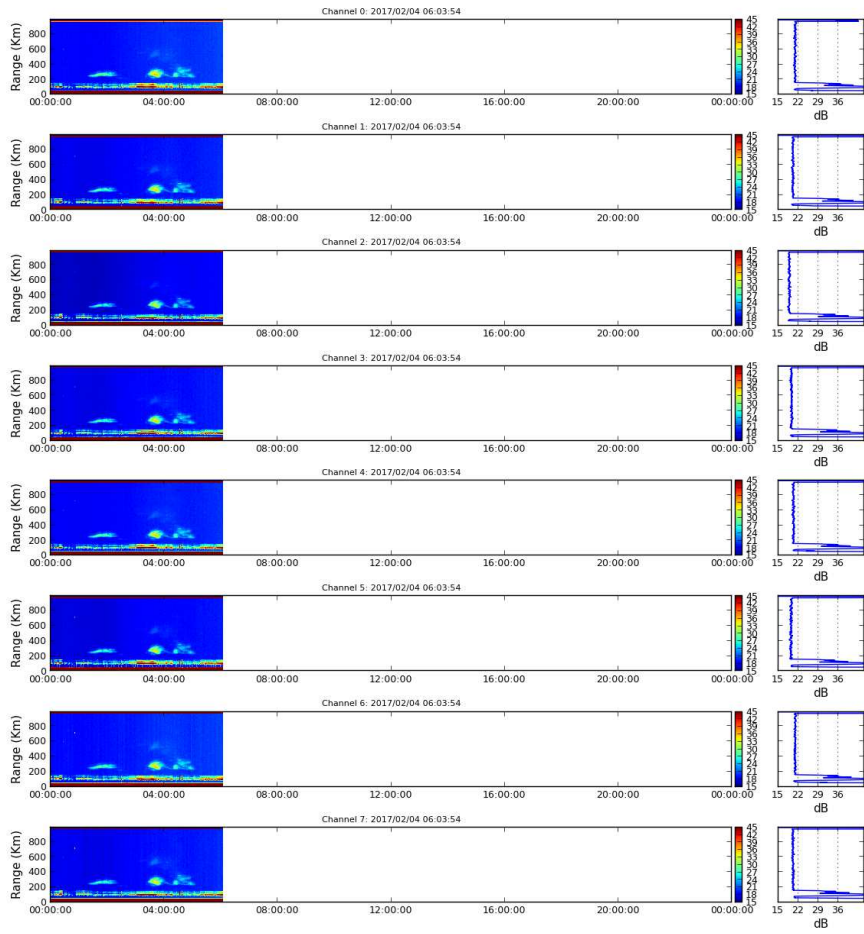


Figure 53. Rti IMAGING 2017-02-04.

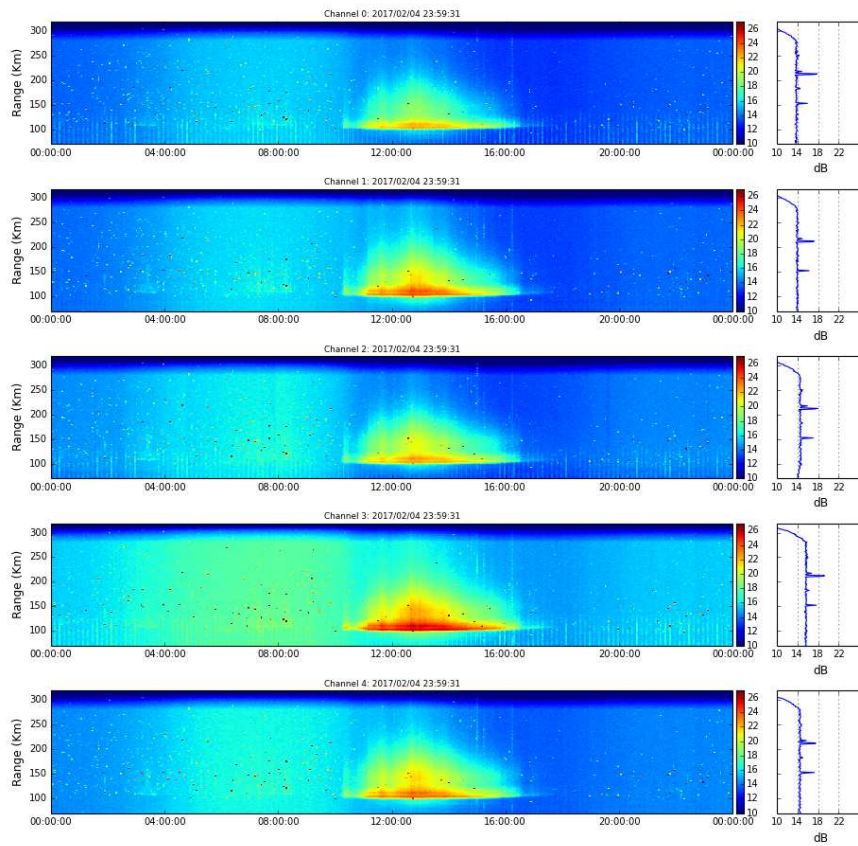


Figure 54. Rti JASMET 2017-02-04.

Drifts obtained:

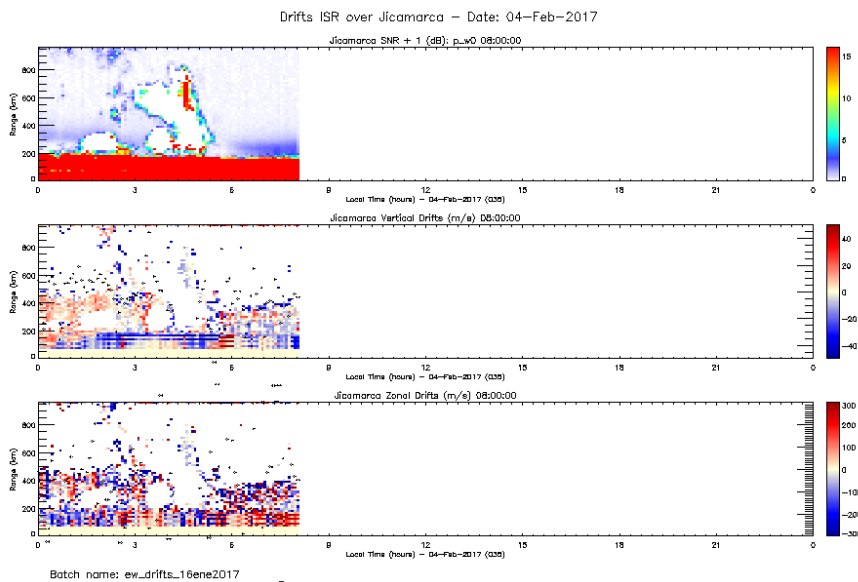


Figure 55. Drifts 2017-02-04.

Annex:

Sky noise for January 23, 2017:

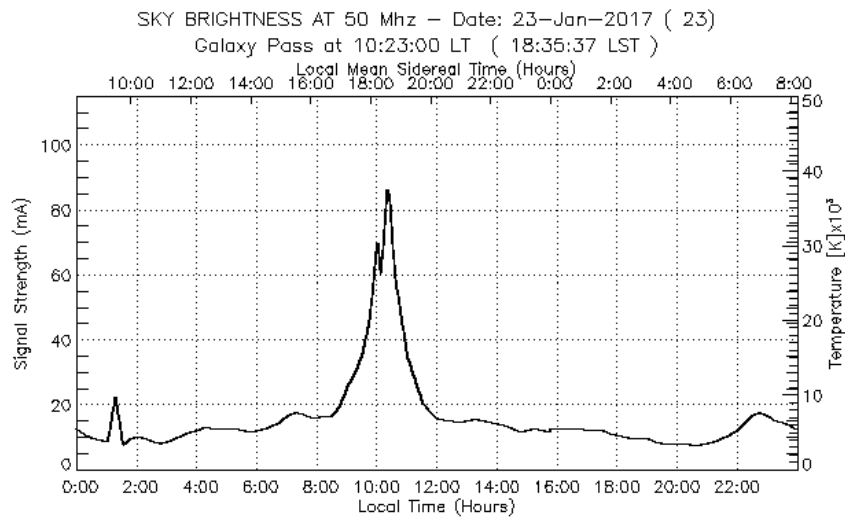


Figure 56. Sky noise.

Antenna pattern

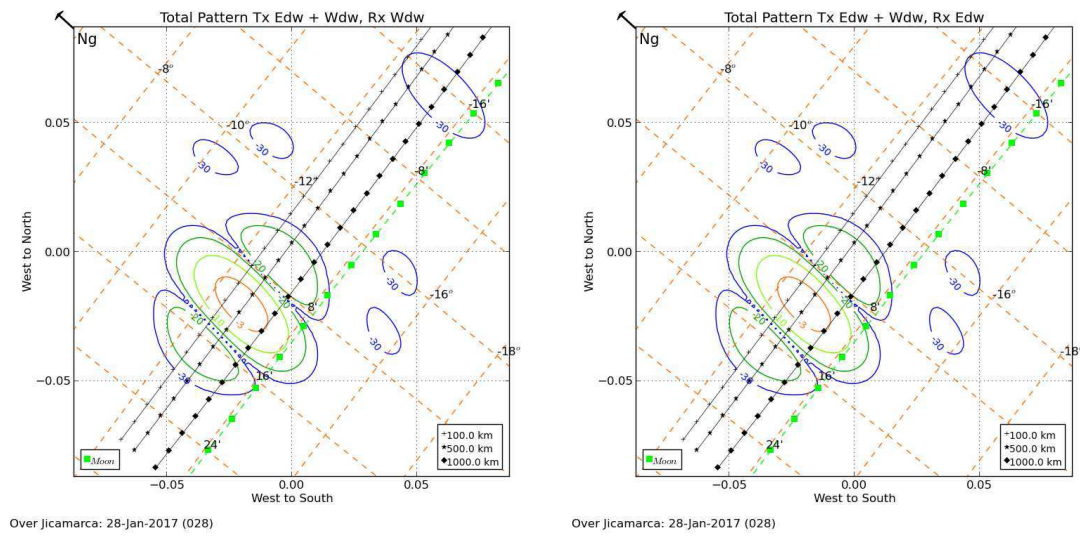
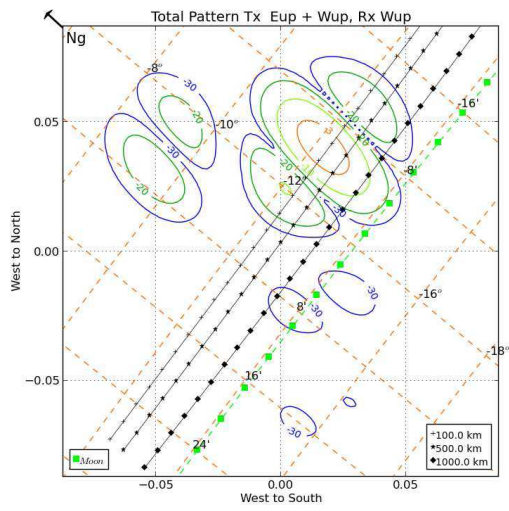
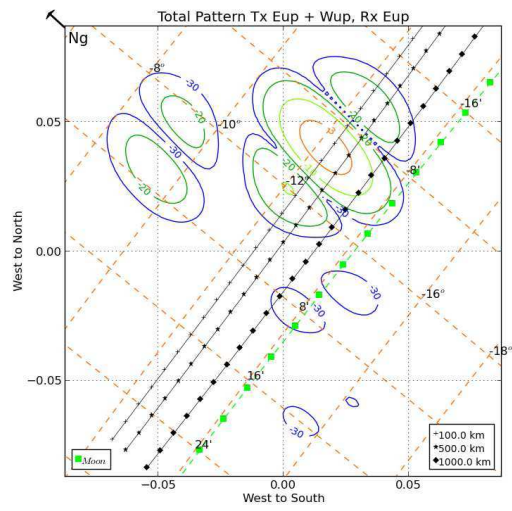


Figure 57. Antennas pattern EW_Drifts: Ch A and Ch B.

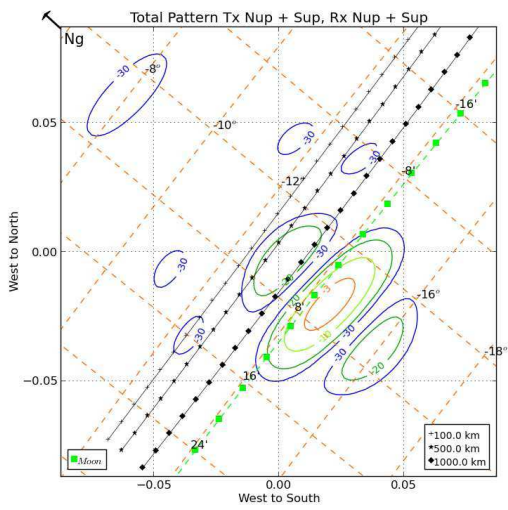


Over Jicamarca: 28-Jan-2017 (028)

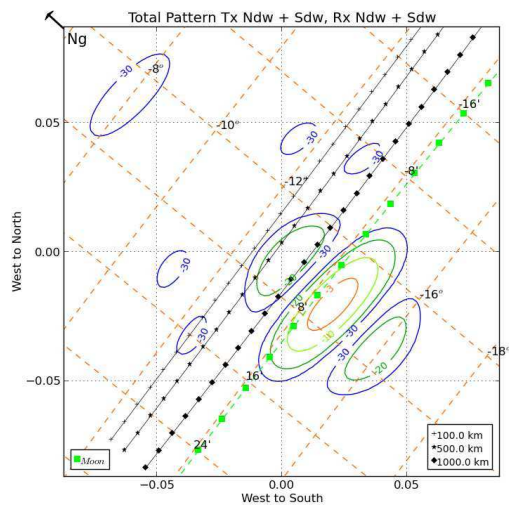


Over Jicamarca: 28-Jan-2017 (028)

Figure 58. EW_Drifts: Ch C and Ch D.



Over Jicamarca: 28-Jan-2017 (028)



Over Jicamarca: 28-Jan-2017 (028)

Figure 59. Faraday: Ch A and Ch B.